



anoma[®]

SURFACES . SCULPTURES . INSTALLATIONS

Stone is the symbol of eternity.
Carved stone patterns, as an architectural and design element,
bring together style and function.

As human imagination and technical innovation evolved, patterns
developed in scope and ambition, providing us at Anoma
limitless opportunity for visual expression and innovative
adornment.

Taking inspiration from natural organic forms such foliage and
corals, to exploring parametric and generative computer-aided
design and glorifying the traditional art of origami, Anoma treads
unchartered waters with natural stone.

For the intent is always to inspire, not to impress.

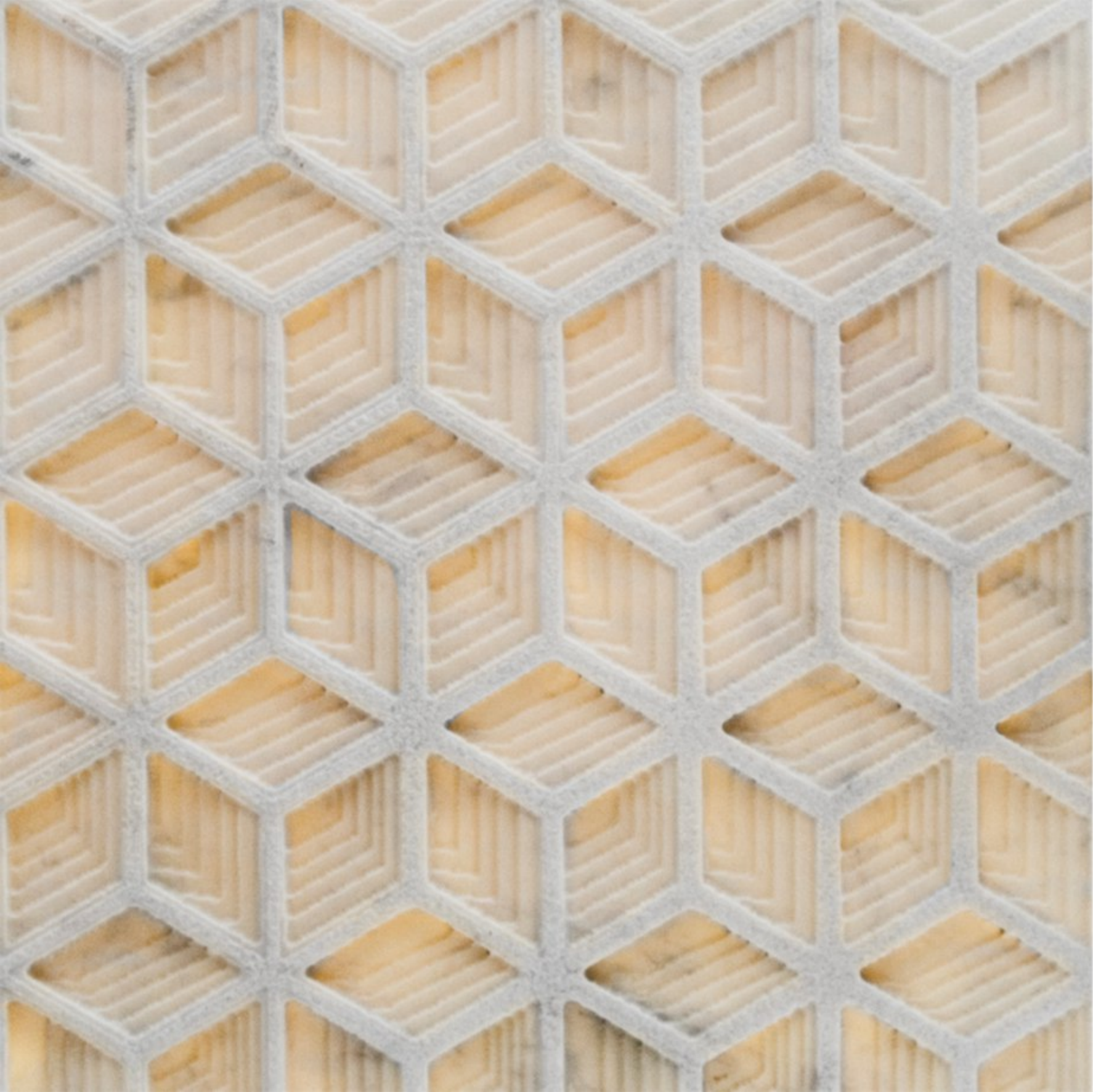


Contents

Surfaces

Sculptures

Installations



SURFACES

Kinetic #07



Pristine White Marble



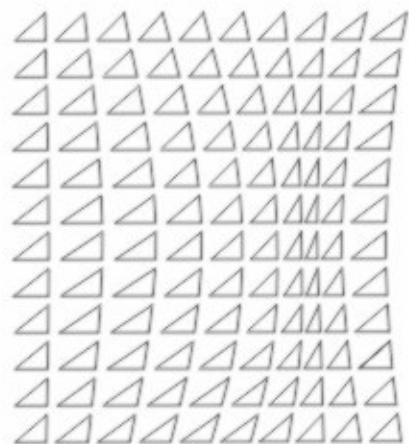
Graphite Grey Granite



Crema Limestone



Taj White Marble



Technical Details

TECHNIQUE - Engraving / Milling

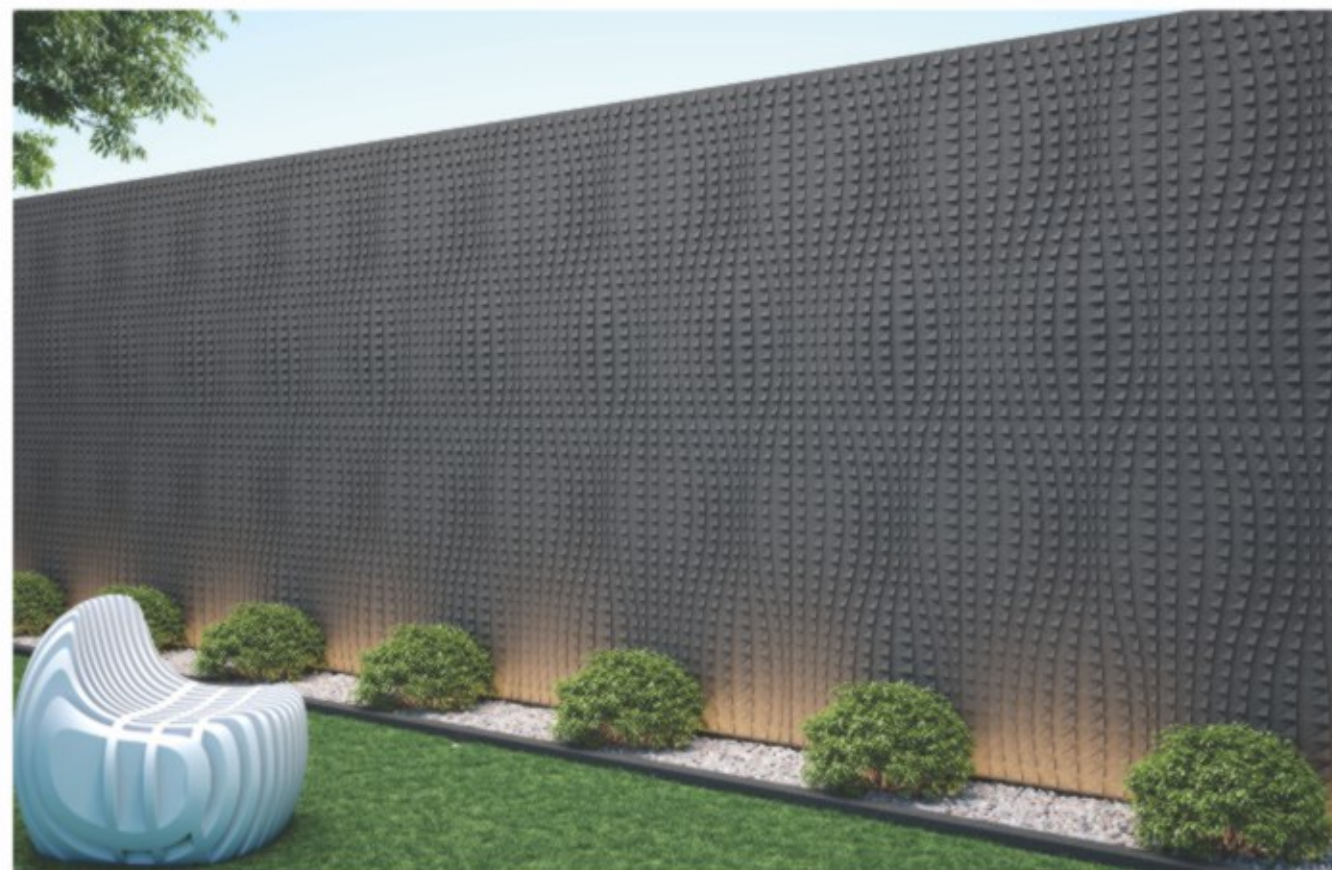
TEXTURE / FINISH - Milled

COMPONENT - Rectangular Stone Module - 24" x 48"

THICKNESS - 20mm (+/- 1mm)

WEIGHT - 7 to 9 pound per sqft

MATERIAL - Pristine White Marble / Graphite Grey Granite / Crema Limestone / Taj White Marble

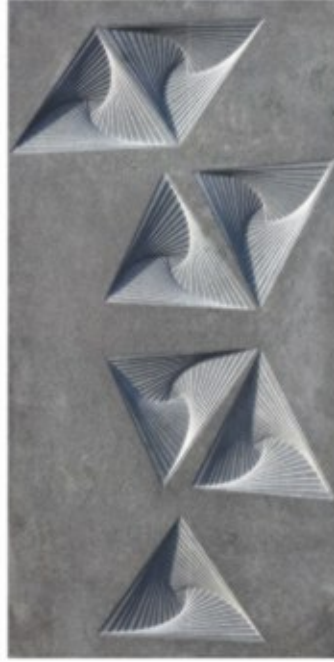


ABOVE | Kinetic #7, in Graphite Grey Granite, on an exterior wall

Sankaku



Pristine White Marble



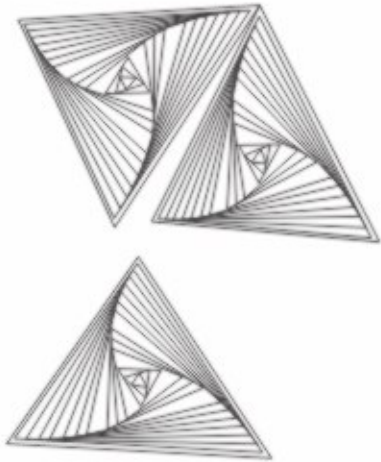
Graphite Grey Granite



Crema Limestone



Taj White Marble



Technical Details

TECHNIQUE - Engraving / Milling

TEXTURE / FINISH - Milled & Shot Blasted

COMPONENT - Rectangular Stone Module - 24" x 48"

THICKNESS - 20mm (+/- 1mm)

WEIGHT - 7 to 9 pound per sqft

MATERIAL - Pristine White Marble / Graphite Grey Granite / Crema Limestone / Taj White Marble

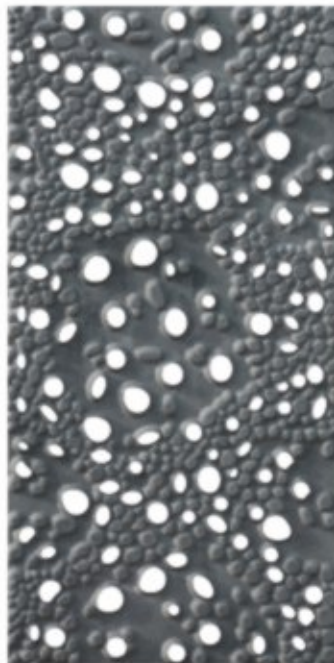


ABOVE | Sankaku, in Crema Limestone, on the Facade

Kinetic #01



Pristine White Marble



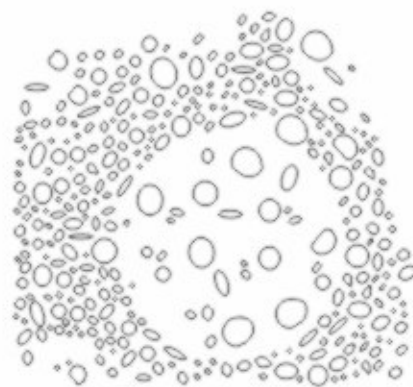
Graphite Grey Granite



Crema Limestone



Taj White Marble



MATERIAL - Pristine White Marble / Graphite Grey Granite / Crema Limestone / Taj White Marble

Technical Details

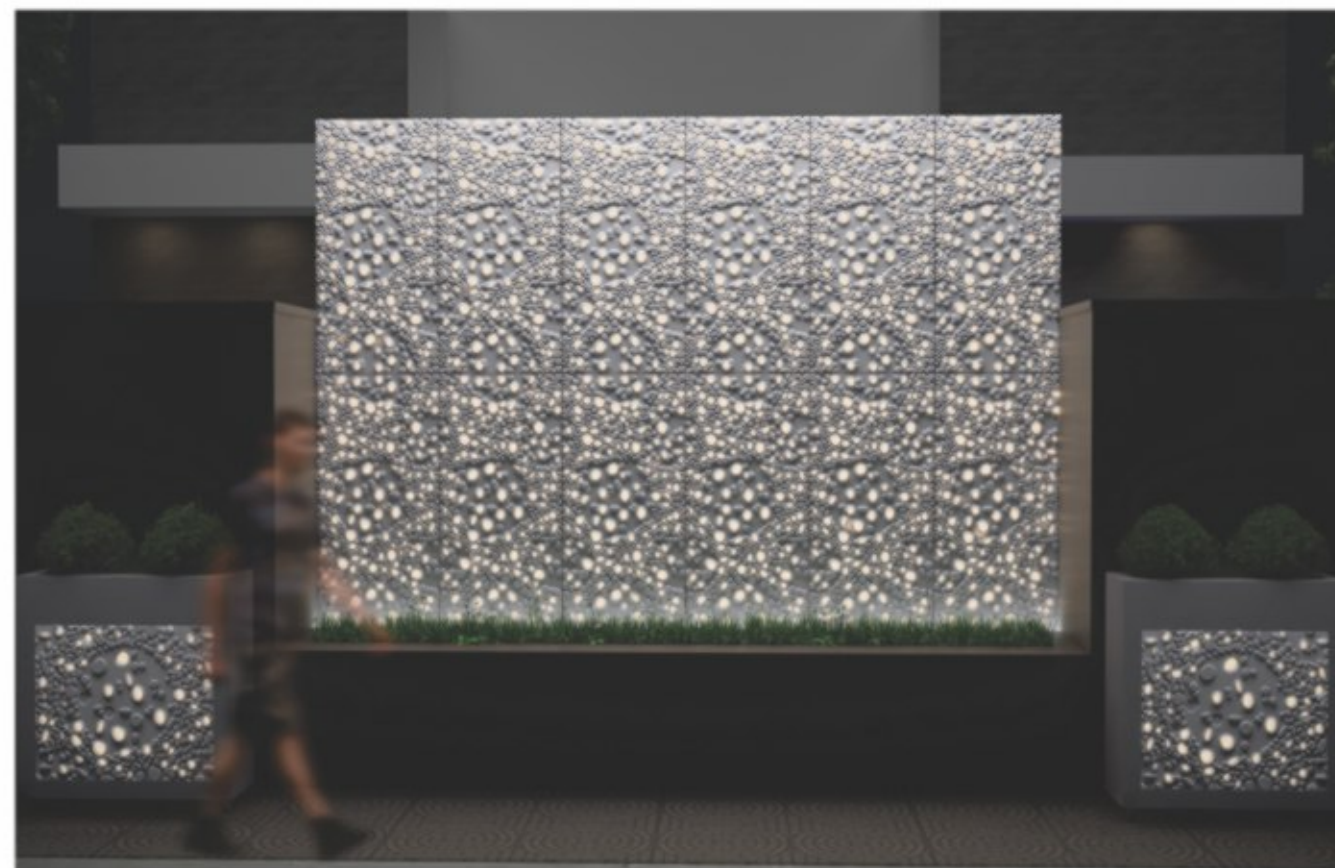
TECHNIQUE - Engraving / Milling

TEXTURE / FINISH - Milled

COMPONENT - Rectangular Stone Module - 24" x 48"

THICKNESS - 20mm (+/- 1mm)

WEIGHT - 7 to 9 pound per sqft

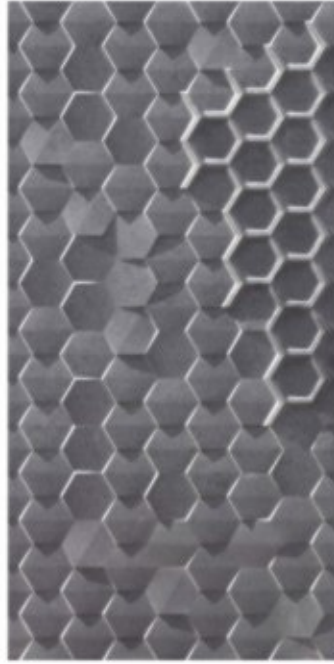


ABOVE | Kinetic #01, in Pristine White Marble, on the boundary wall, as a back-lit panel

Rokakku



Pristine White Marble



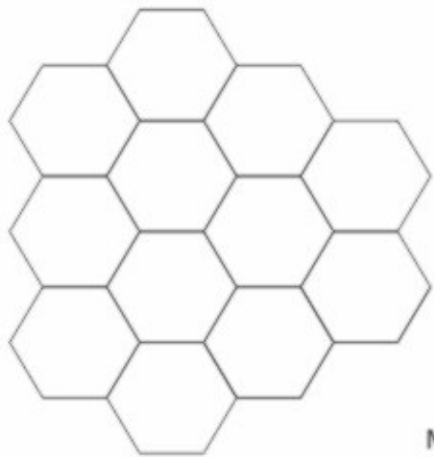
Graphite Grey Granite



Crema Limestone



Taj White Marble



Technical Details

TECHNIQUE - Engraving / Milling

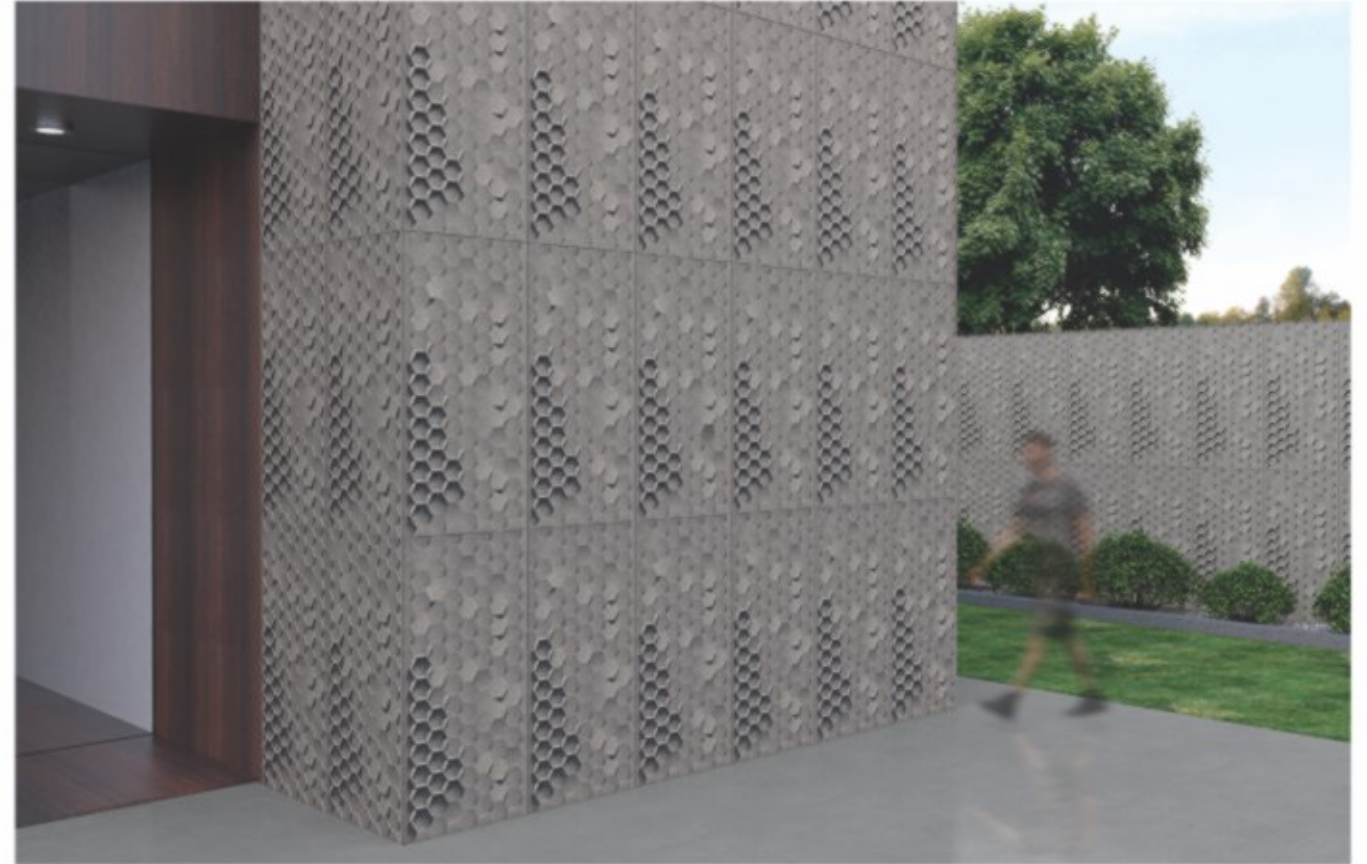
TEXTURE / FINISH - Milled

COMPONENT - Rectangular Stone Module - 24" x 48"

THICKNESS - 20mm (+/- 1mm)

WEIGHT - 7 to 9 pound per sqft

MATERIAL - Pristine White Marble / Graphite Grey Granite / Crema Limestone / Taj White Marble



ABOVE | Rokakku, in Graphite Grey Granite, on the boundary wall & Facade

Xylem



Pristine White Marble



Graphite Grey Granite



Crema Limestone



Taj White Marble



Technical Details

TECHNIQUE - Engraving / Milling

TEXTURE / FINISH - Milled & Shot Blasted

COMPONENT - Rectangular Stone Module - 24" x 48"

THICKNESS - 20mm (+/- 1mm)

WEIGHT - 7 to 9 pound per sqft

MATERIAL - Pristine White Marble / Graphite Grey Granite / Crema Limestone / Taj White Marble

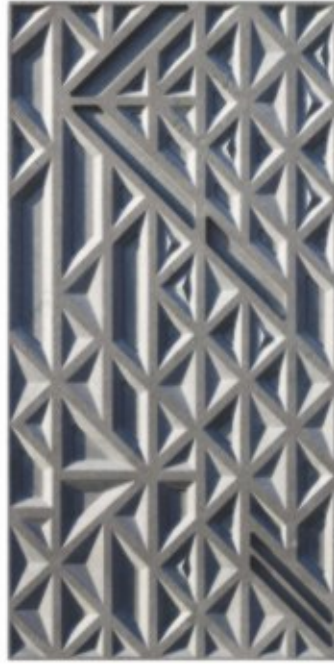


ABOVE | Xylem, in Pristine White Marble, as an installation for interiors

Kona



Pristine White Marble



Graphite Grey Granite



Crema Limestone



Taj White Marble



MATERIAL - Pristine White Marble / Graphite Grey Granite / Crema Limestone / Taj White Marble

Technical Details

TECHNIQUE - Engraving / Milling

TEXTURE / FINISH - Milled & Shot Blasted

COMPONENT - Rectangular Stone Module - 24" x 48"

THICKNESS - 20mm (+/- 1mm)

WEIGHT - 7 to 9 pound per sqft

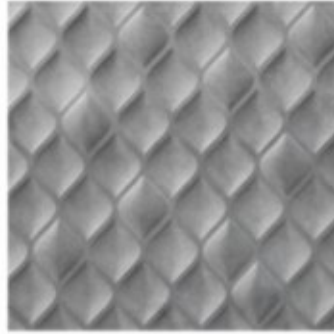


ABOVE | Kona, in Crema Limestone, at the building facade

Dewdrop



Pristine White Marble



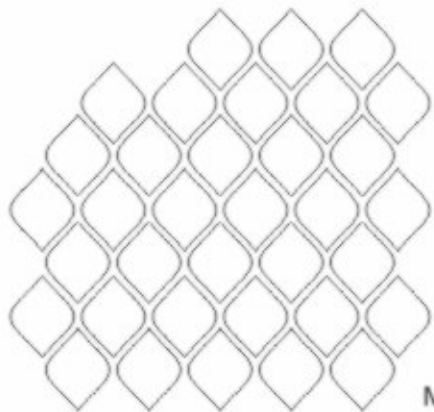
Graphite Grey Granite



Crema Limestone



Taj White Marble



Technical Details

TECHNIQUE - Engraving / Milling

TEXTURE / FINISH - Milled

COMPONENT - Square Stone Module - 24" x 24"

THICKNESS - 20mm (+/- 1mm)

WEIGHT - 7 to 9 pound per sqft

MATERIAL - Pristine White Marble / Graphite Grey Granite / Crema Limestone / Taj White Marble

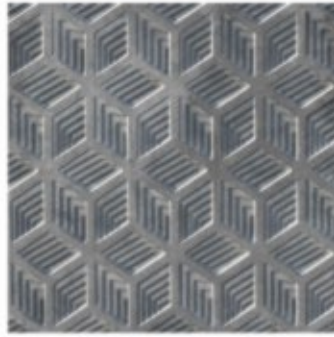


ABOVE | Dewdrop, in Graphite Grey Granite, on the Facade

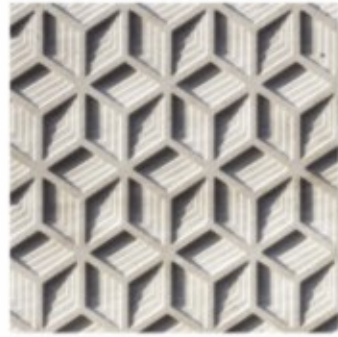
Haibu



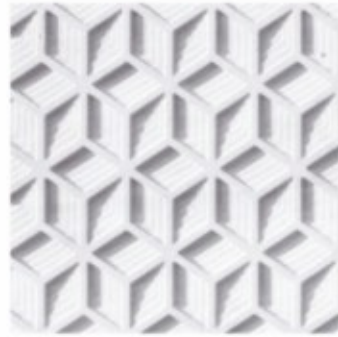
Pristine White Marble



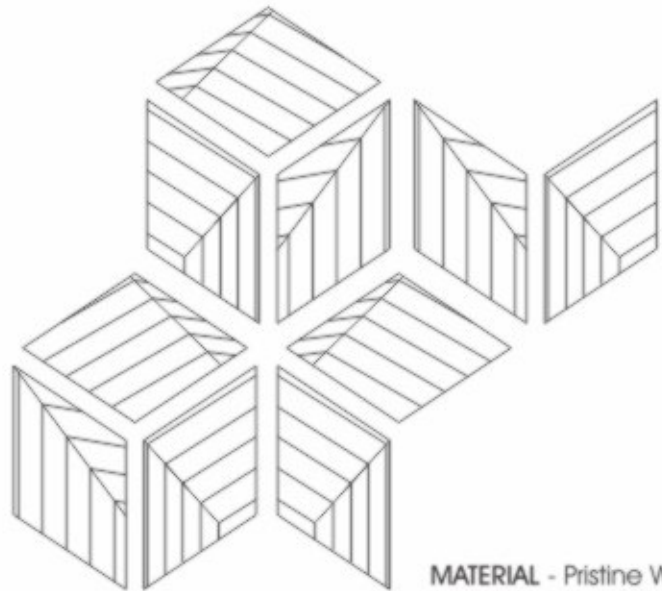
Graphite Grey Granite



Crema Limestone



Taj White Marble



Technical Details

TECHNIQUE - Engraving / Milling

TEXTURE / FINISH - Milled & Shot Blasted

COMPONENT - Square Stone Module - 24" x 24"

THICKNESS - 20mm (+/- 1mm)

WEIGHT - 7 to 9 pound per sqft

MATERIAL - Pristine White Marble / Graphite Grey Granite / Crema Limestone / Taj White Marble

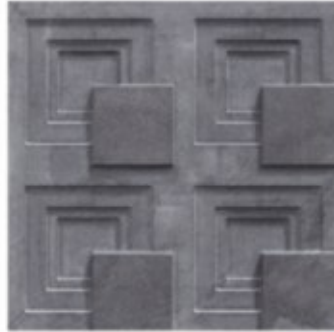


ABOVE | Haibu, in Crema Limestone, as an installation for interiors

Edge



Pristine White Marble



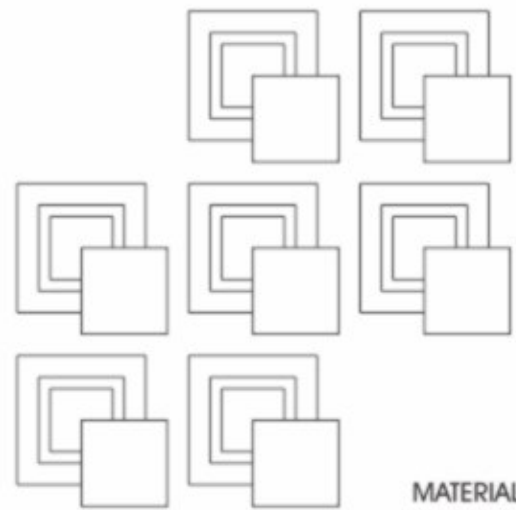
Graphite Grey Granite



Crema Limestone



Taj White Marble



Technical Details

TECHNIQUE - Engraving / Milling

TEXTURE / FINISH - Milled & Shot Blasted

COMPONENT - Square Stone Module - 24" x 24"

THICKNESS - 20mm (+/- 1mm)

WEIGHT - 7 to 9 pound per sqft

MATERIAL - Pristine White Marble / Graphite Grey Granite / Crema Limestone / Taj White Marble

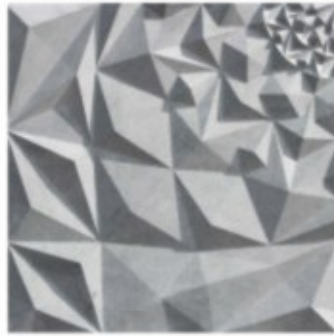


ABOVE | Edge, in Graphite Grey Granite, on the Facade

Fasetto



Pristine White Marble



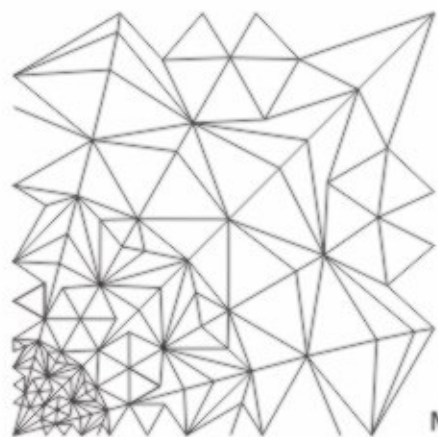
Graphite Grey Granite



Crema Limestone



Taj White Marble



Technical Details

TECHNIQUE - Engraving / Milling

TEXTURE / FINISH - Milled

COMPONENT - Square Stone Module - 24" x 24"

THICKNESS - 20mm (+/- 1mm)

WEIGHT - 7 to 9 pound per sqft

MATERIAL - Pristine White Marble / Graphite Grey Granite / Crema Limestone / Taj White Marble

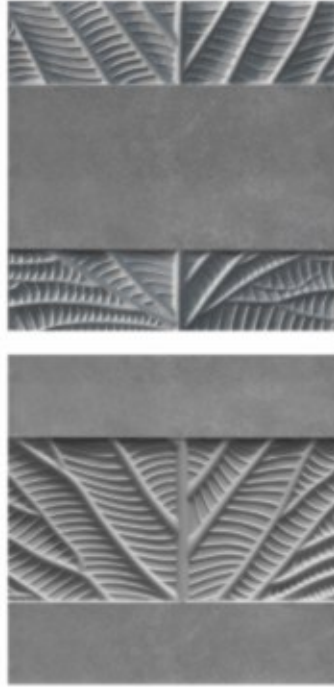


ABOVE | Fasetto, in Pristine White Marble, as an installation for interiors

Elm



Pristine White Marble



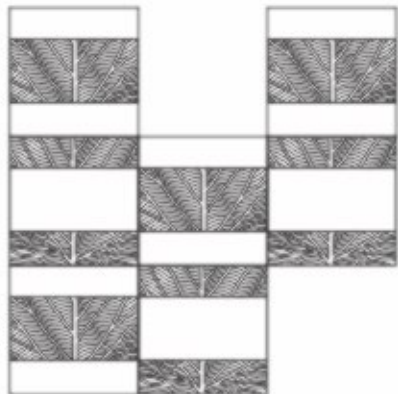
Graphite Grey Granite



Crema Limestone



Taj White Marble



Technical Details

TECHNIQUE - Engraving / Milling

TEXTURE / FINISH - Milled & Shot Blasted

COMPONENT - Square Stone Module - 24" x 24"

THICKNESS - 20mm (+/- 1mm)

WEIGHT - 7 to 9 pound per sqft

MATERIAL - Pristine White Marble / Graphite Grey Granite / Crema Limestone / Taj White Marble



ABOVE | Elm, in Pristine White Marble, as a modular pattern along with textured stone

Maple



Pristine White Marble



Graphite Grey Granite



Crema Limestone



Taj White Marble



Technical Details

TECHNIQUE - Engraving / Milling

TEXTURE / FINISH - Milled

COMPONENT - Square Stone Module - 24" x 24"

THICKNESS - 20mm (+/- 1mm)

WEIGHT - 7 to 9 pound per sqft

MATERIAL - Pristine White Marble / Graphite Grey Granite / Crema Limestone / Taj White Marble

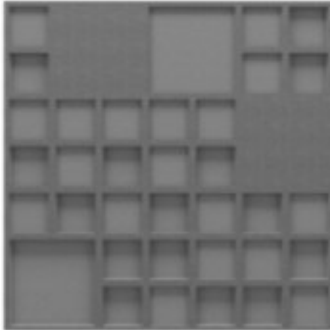


ABOVE | Maple, in Pristine White Marble, as an installation for interiors

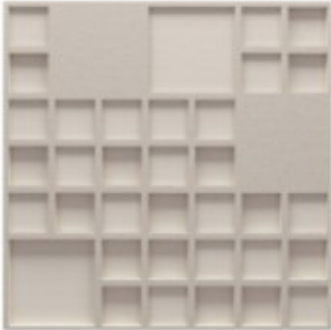
Grid



Pristine White Marble



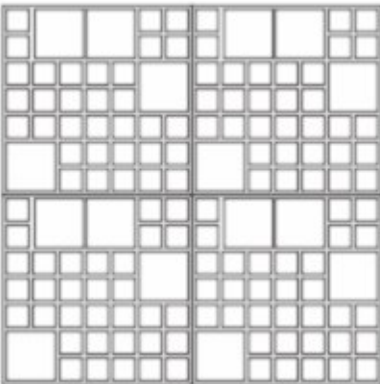
Graphite Grey Granite



Crema Limestone



Taj White Marble



Technical Details

TECHNIQUE - Engraving / Milling

TEXTURE / FINISH - Milled & Polished / Shot Blasted

COMPONENT - Square Stone Module - 24" x 24"

THICKNESS - 20mm (+/- 1mm)

WEIGHT - 7 to 9 pound per sqft

MATERIAL - Pristine White Marble / Graphite Grey Granite / Crema Limestone / Taj White Marble

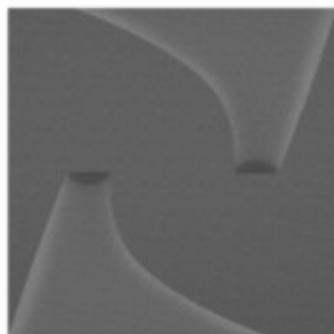


ABOVE | Grid, in Graphite Grey Granite, as an installation for interiors

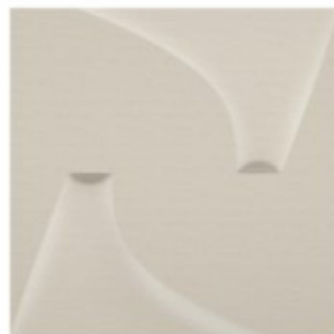
Tornado



Pristine White Marble



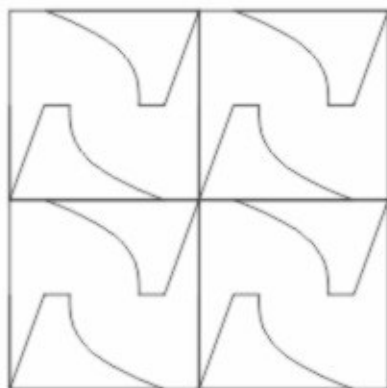
Graphite Grey Granite



Crema Limestone



Taj White Marble



Technical Details

TECHNIQUE - Engraving / Milling

TEXTURE / FINISH - Milled & Polished / Shot Blasted

COMPONENT - Square Stone Module - 24" x 24"

THICKNESS - 20mm (+/- 1mm)

WEIGHT - 7 to 9 pound per sqft

MATERIAL - Pristine White Marble / Graphite Grey Granite / Crema Limestone / Taj White Marble

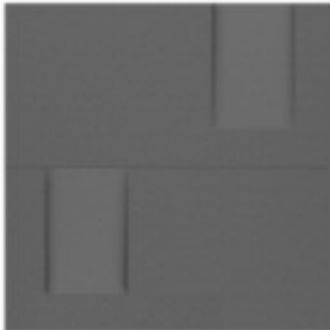


ABOVE | Tornado, in Crema Limestone, as an installation for interiors

Socket



Pristine White Marble



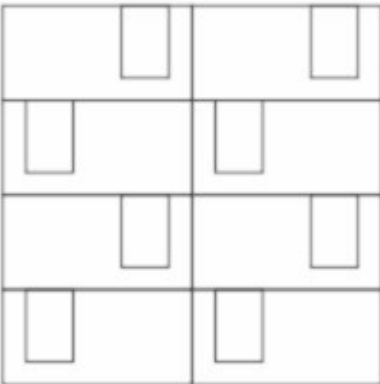
Graphite Grey Granite



Crema Limestone



Taj White Marble



Technical Details

TECHNIQUE - Engraving / Milling

TEXTURE / FINISH - Milled & Polished / Shot Blasted

COMPONENT - Square Stone Module - 24" x 24"

THICKNESS - 20mm (+/- 1mm)

WEIGHT - 7 to 9 pound per sqft

MATERIAL - Pristine White Marble / Graphite Grey Granite / Crema Limestone / Taj White Marble

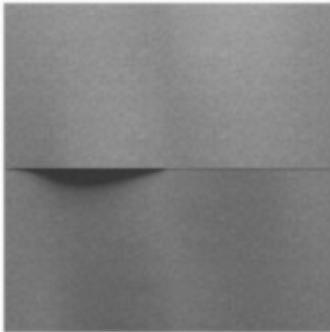


ABOVE | Socket, in Pristine White Marble, as an installation for interiors

Ripple



Pristine White Marble



Graphite Grey Granite



Crema Limestone



Taj White Marble

Technical Details

TECHNIQUE - Engraving / Milling

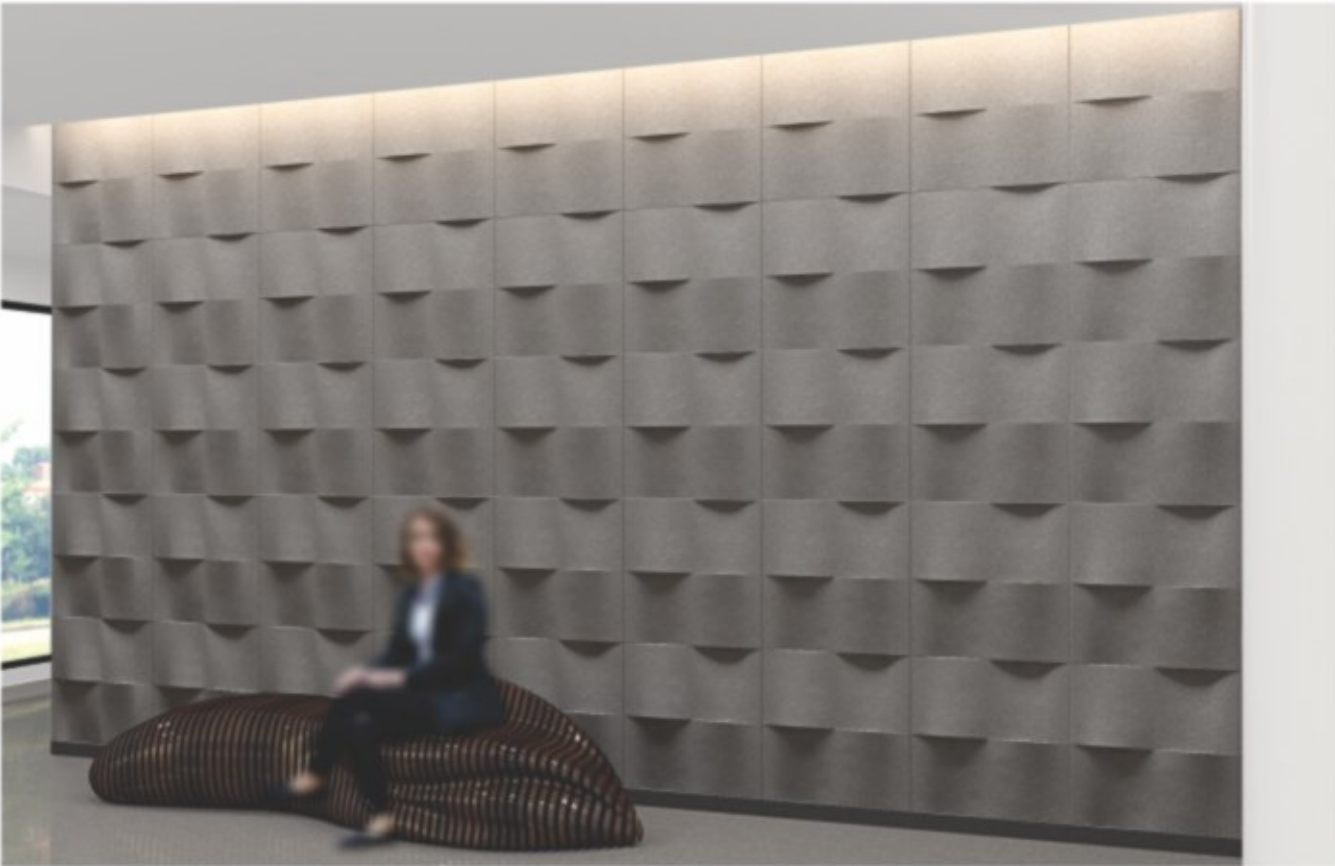
TEXTURE / FINISH - Milled & Polished / Shot Blasted

COMPONENT - Square Stone Module - 24" x 24"

THICKNESS - 20mm (+/- 1mm)

WEIGHT - 7 to 9 pound per sqft

MATERIAL - Pristine White Marble / Graphite Grey Granite / Crema Limestone / Taj White Marble

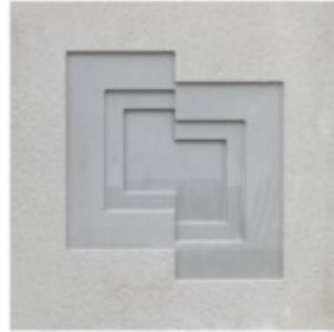


ABOVE | Ripple, in Graphite Grey Granite, as an installation for interiors

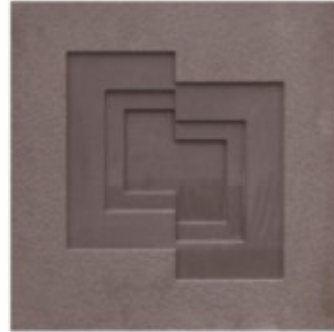


QUARTZITE SERIES

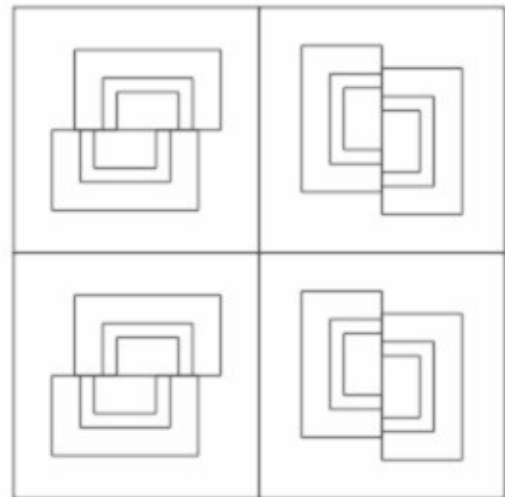
Shift



Autumn Grey Quartzite



Autumn Brown Quartzite



Technical Details

TECHNIQUE - Engraving / Milling

TEXTURE / FINISH - Milled & Shot Blasted

COMPONENT - Square Stone Module - 24" x 24"

THICKNESS - 20mm (+/- 1mm)

WEIGHT - 7 to 9 pound per sqft

MATERIAL - Autumn Grey Quartzite / Autumn Brown Quartzite



ABOVE | Shift, in Autumn Grey Quartzite, on the Facade & Boundary wall

Cast



Autumn Grey Quartzite



Autumn Brown Quartzite

Technical Details

TECHNIQUE - Engraving / Milling

TEXTURE / FINISH - Milled

COMPONENT - Rectangular Stone Module - 24" x 48"

THICKNESS - 20mm (+/- 1mm)

WEIGHT - 7 to 9 pound per sqft

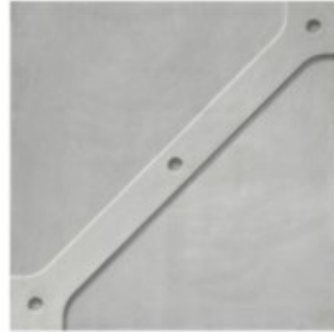
MATERIAL - Autumn Grey Quartzite / Autumn Brown Quartzite



ABOVE | Cast, in Autumn Brown Quartzite, on the Facade



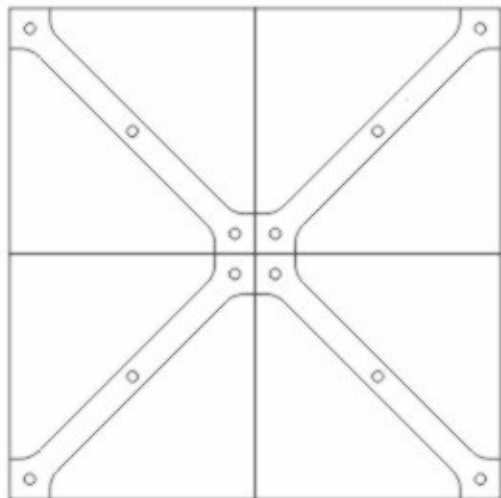
Rivet



Autumn Grey Quartzite



Autumn Brown Quartzite



Technical Details

TECHNIQUE - Engraving / Milling

TEXTURE / FINISH - Milled

COMPONENT - Square Stone Module - 24" x 24"

THICKNESS - 20mm (+/- 1mm)

WEIGHT - 7 to 9 pound per sqft

MATERIAL - Autumn Grey Quartzite / Autumn Brown Quartzite

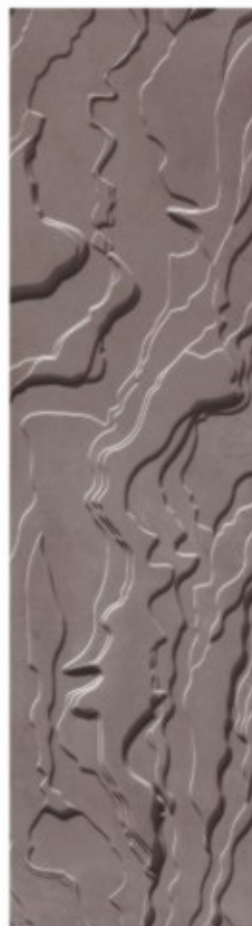


ABOVE | Rivet, in Autumn Grey Quartzite, on the Facade & Boundary wall

Countour



Autumn Grey Quartzite



Autumn Brown Quartzite

Technical Details

TECHNIQUE - Engraving / Milling

TEXTURE / FINISH - Milled

COMPONENT - Rectangular Stone Module - 24" x 96"

THICKNESS - 20mm (+/- 1mm)

WEIGHT - 7 to 9 pound per sqft

MATERIAL - Autumn Grey Quartzite / Autumn Brown Quartzite



ABOVE | Countour, in Autumn Grey Quartzite, on the Facade



CRUDO

Random Slabs



Cosmic Fantasy



Marine Black



Silver Matrix



Moon Face



Grey Fantasy



ABOVE | Textured Slabs for Flooring & Landscape Application

Technical Details

TEXTURE / FINISH - Hydro / Leather
COMPONENT - Random Slabs 8' x 4'+
THICKNESS - 20 mm (+/-1mm) / 30 mm (+/-1mm)



SCULPTURES

Illuminated Cuboids

XYLEM, KINETIC #01, KONA

Illuminated Cuboids - Designed for Opulence & Functionality these large cuboids double up as planter boxes and light bollards. An ideal addition to any indoor/outdoor setting, these are available in three patterns and in a choice of Taj White, Graphite Grey, Crema Limestone



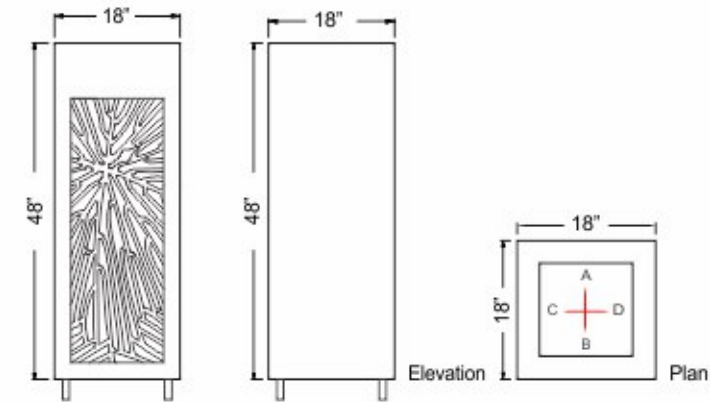
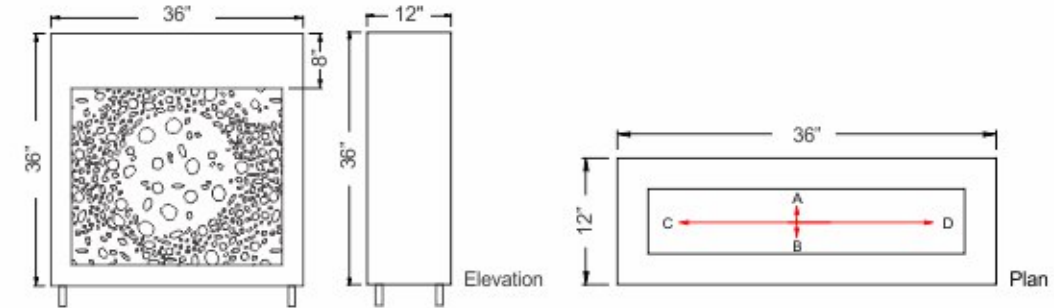
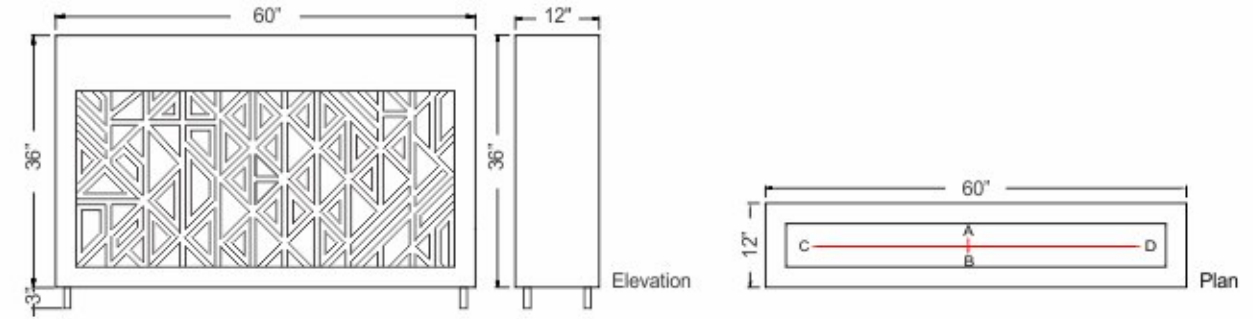
Kona - Taj White Marble



Kinetic #01 - Crema Limestone



Xylem - Graphite Grey Granite



Technical Details

TECHNIQUE - Engraving / Milling

TEXTURE / FINISH - Milled & Shot Blasted

COMPONENT - Rectangular Stone Module - 60" x 36" / 36" x 36" / 48" x 18"

THICKNESS - 30mm (+/- 1mm)

MATERIAL - Taj White Marble / Graphite Grey Granite / Crema Limestone

Cuboids

KONA, SHIFT, GRID

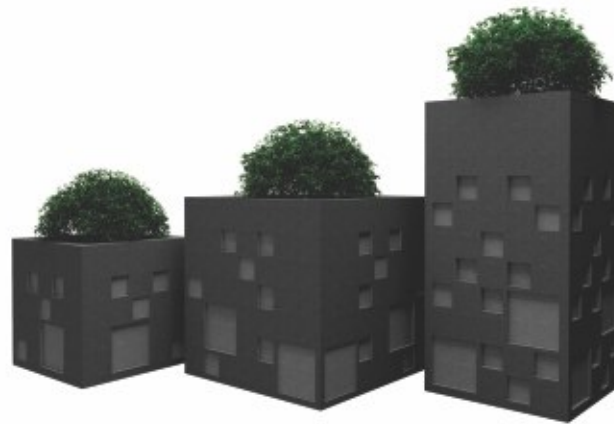
Planter boxes designed for indoor, outdoors, Application, these are available in three patterns and in a choice of Taj White, Graphite Grey, Dhrangadhra Stone, Agra Red, Gwalior White



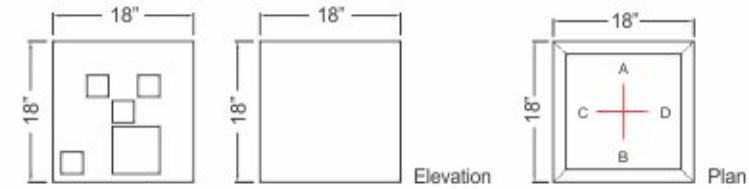
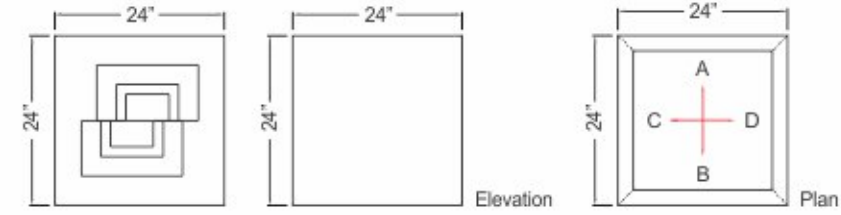
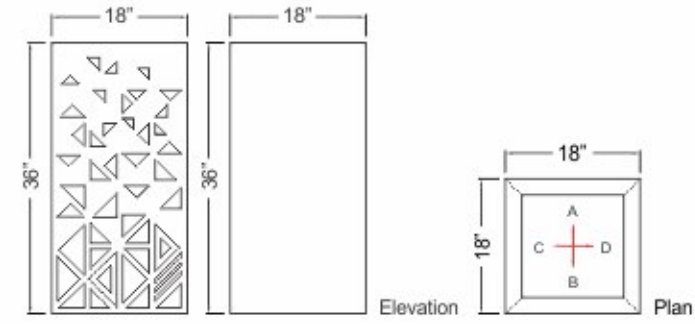
Kona - Taj White Marble



Shift - Dhrangadhra Stone



Grid - Graphite Grey Granite



Technical Details

TECHNIQUE - Engraving / Milling

TEXTURE / FINISH - Milled & Shot Blasted

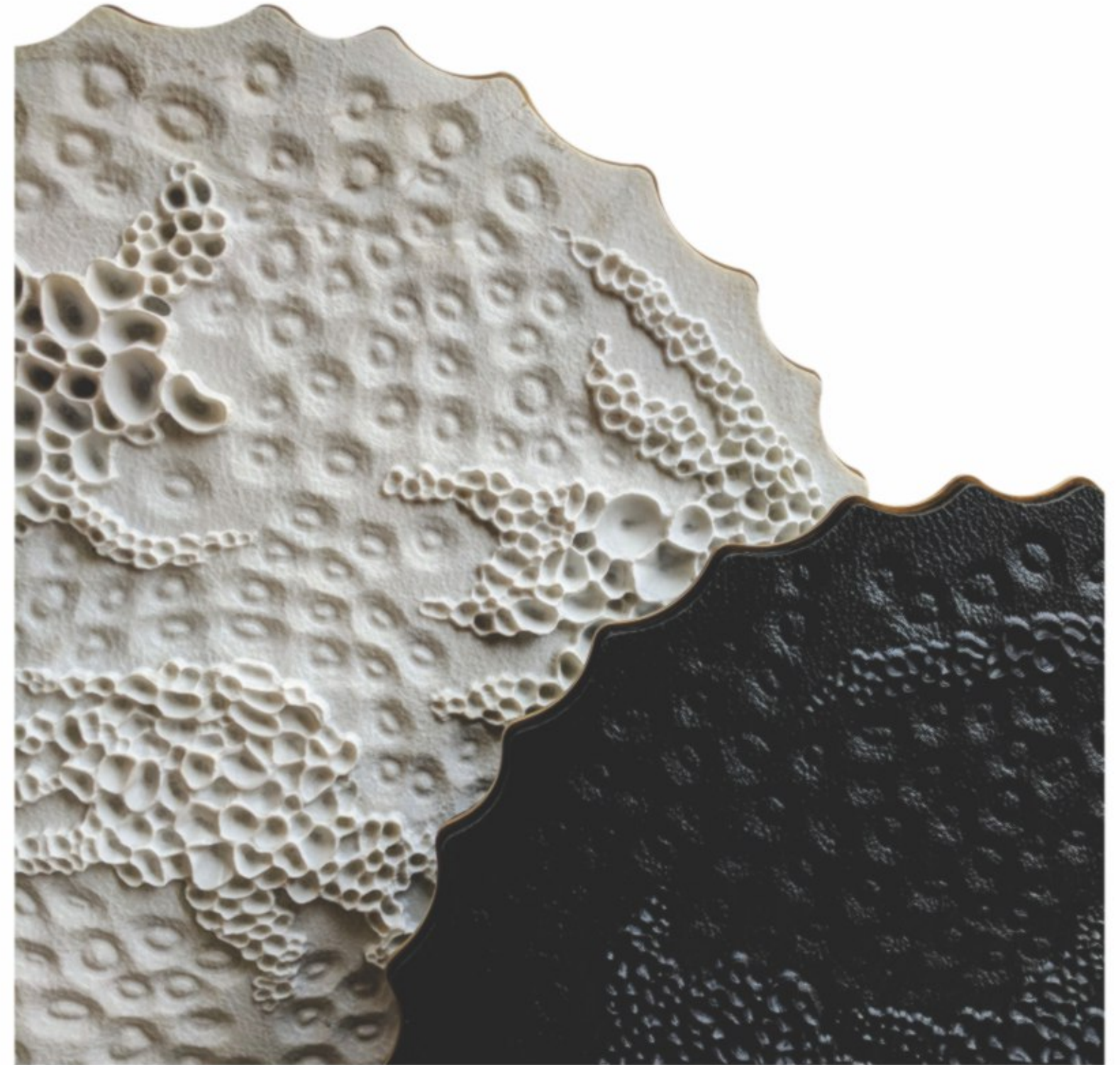
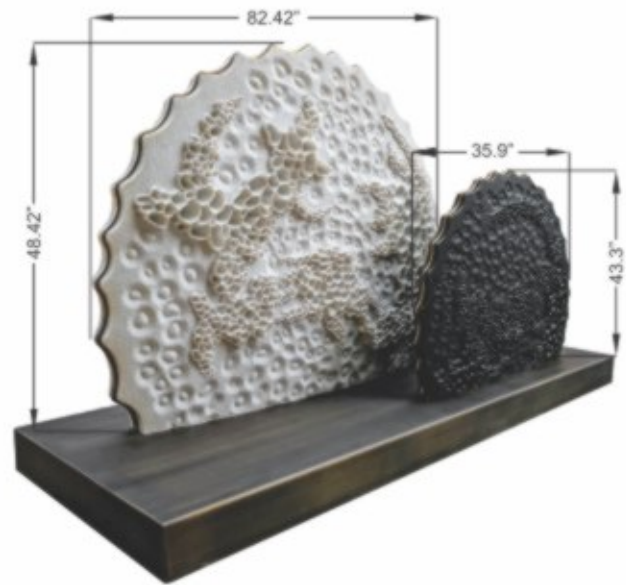
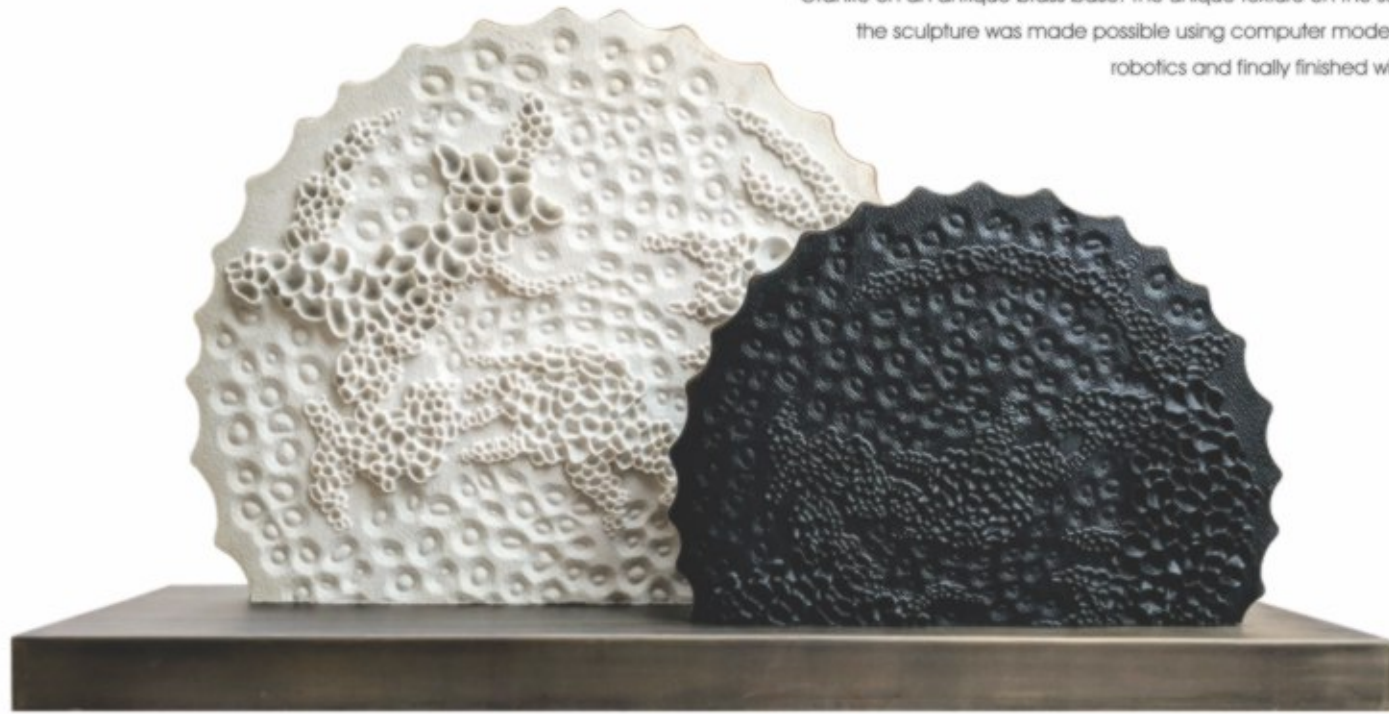
COMPONENT - Rectangular Stone Module - 36" x 18" / 24" x 24" / 18" x 18"

THICKNESS - 30mm (+/- 1mm)

MATERIAL - Taj White Marble / Graphite Grey Granite / Dhrangadhra Stone / Agra Red / Gwalior White

Anemone

The Anemone, highlights the unique form and textures on the sea anemone on a block of Carrara White Marble & Absolute Black Granite on an antique brass base. The unique texture on the surface of the sculpture was made possible using computer modelling and robotics and finally finished with hand.



Bodhi

The Bodhi I & Bodhi II, delves into the oft unappreciated veining found on the leaf. Presented as wall art, the panels are carved in Carrara White Marble & Absolute Black Granite with a antique brass frame.

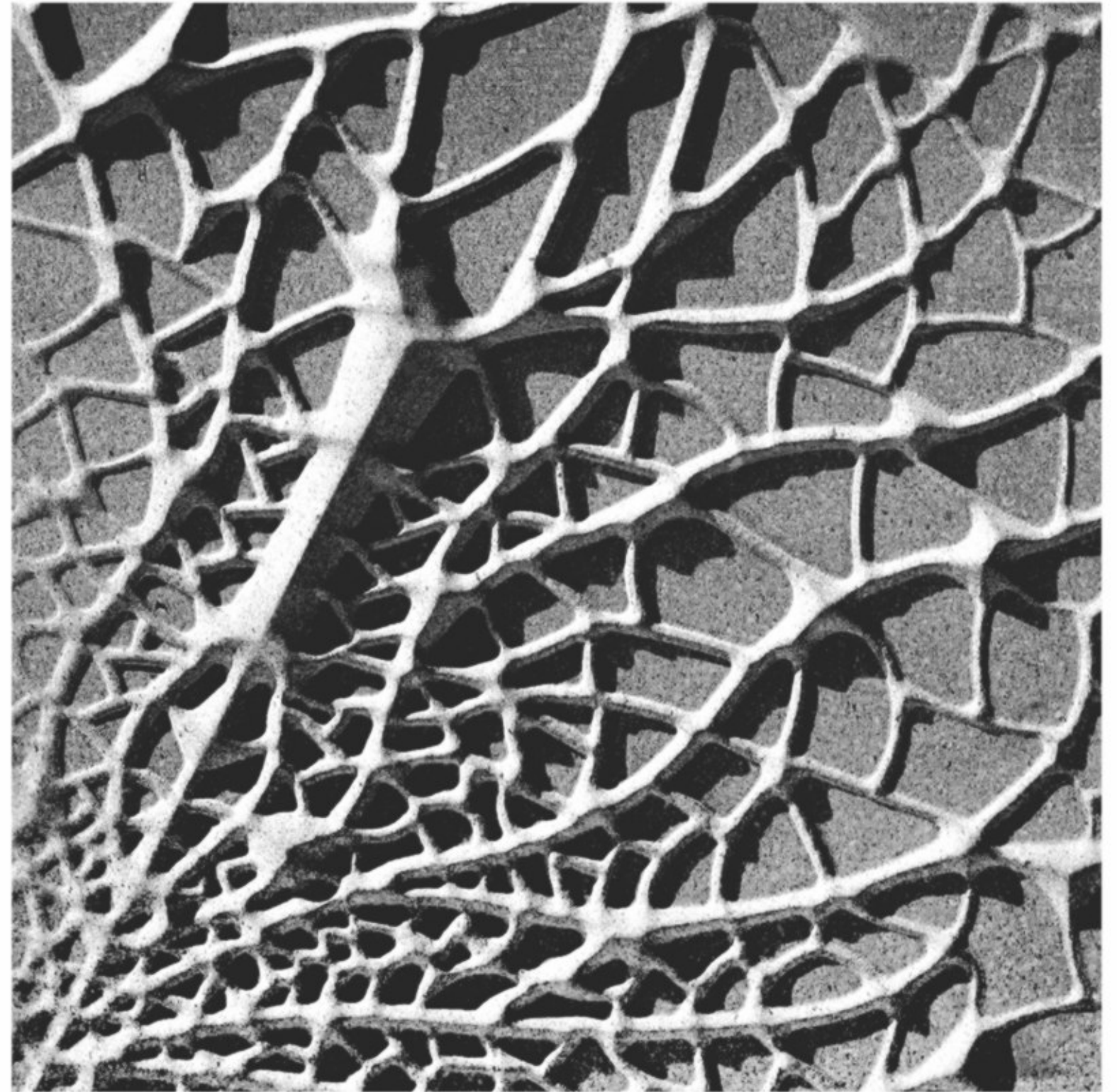


Technical Details

TECHNIQUE - Engraving / Milling

TEXTURE / FINISH - Milled

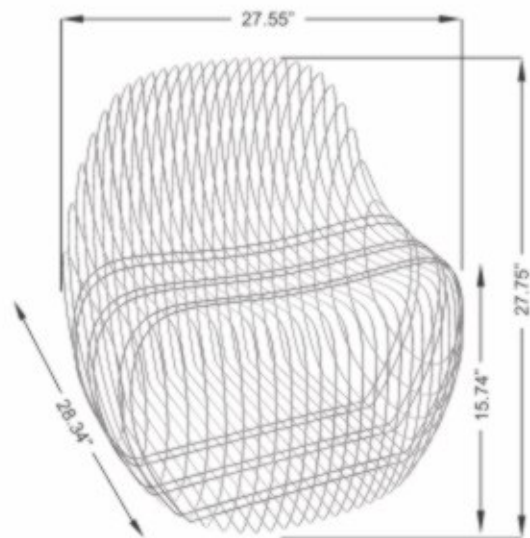
THICKNESS - 30mm (+/- 1mm)



Splice

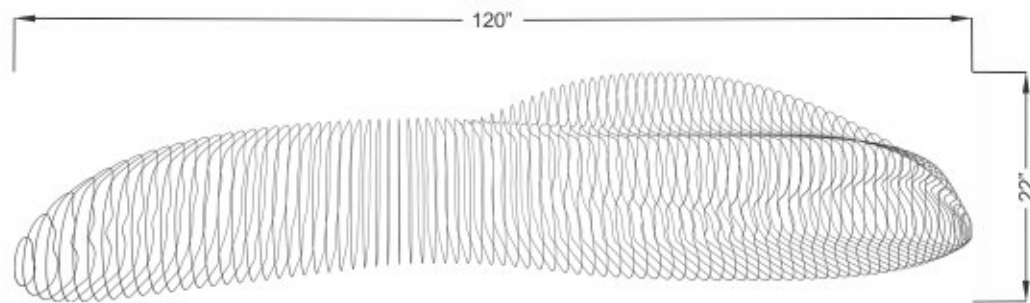
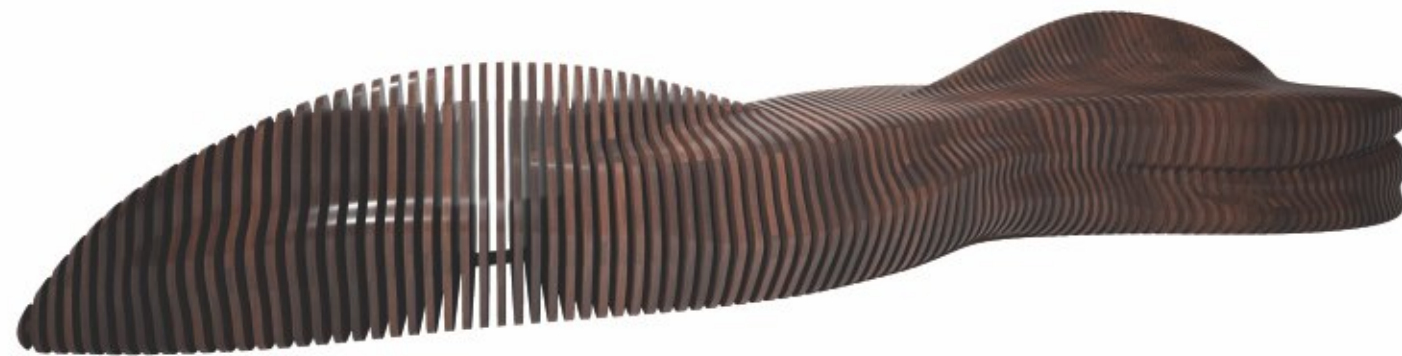
A digitally fabricated comfortable chair, which will be a great conversation piece.

Available in multitude of colours in PU Coated HDF & Natural Stained Plywood.



Caterpillar

These amorphous pieces of furniture, subtly resembling the garden creature, caterpillar, are an exciting addition to any communal space. These sculptural pieces, can be scaled to suit spaces and are available in Natural Stone, Wood & MDF.



Technical Details

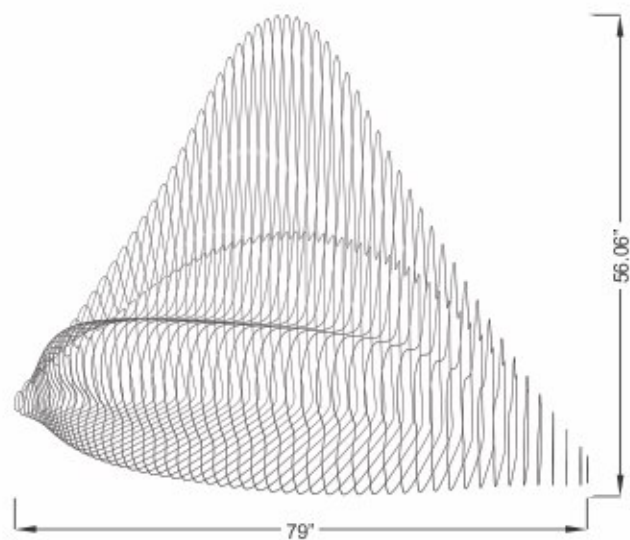
SIZE - 168"X22" / 120"X22" / 72"X22"



Snail

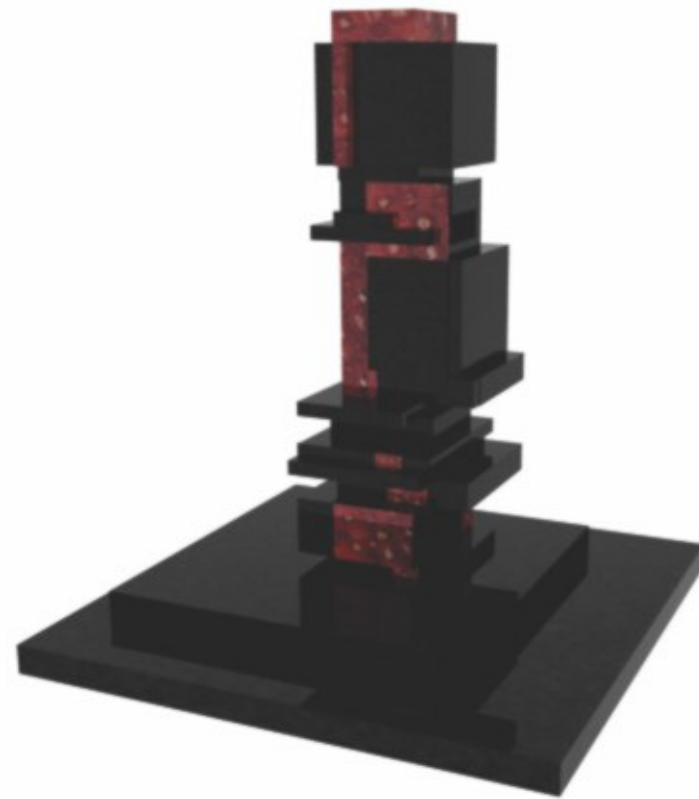
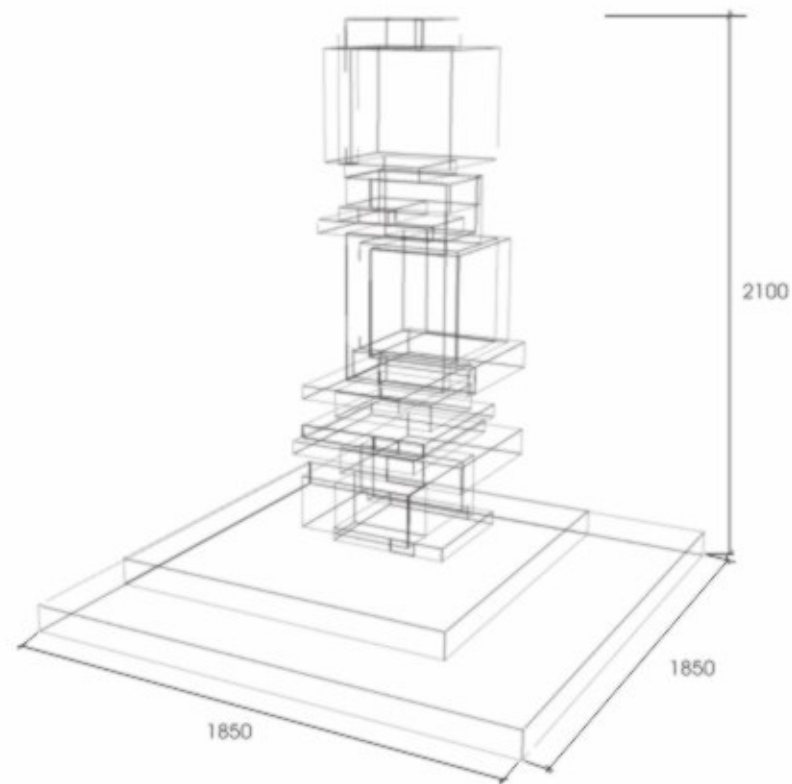
These amorphous pieces of furniture, subtly resembling the garden creature, snail , are an exciting addition to any communal space.

These sculptural pieces, can be scaled to suit spaces and are available in Natural Stone, Wood & MDF.



Kempinski

Anoma collaborated with the Landscape Architects to conceptualise and develop 105 sculptures at the 500 room Hospitality project. These included custom lotus sculptures carved from single granite blocks (approx 2000 lbs), hand polished and Stacked Cuboid sculptures, a combination of Absolute Black Granite and semi precious stones (African Carnelian, Grey Agate, Red Onyx, Indian Agate and Lapis Lazuli).



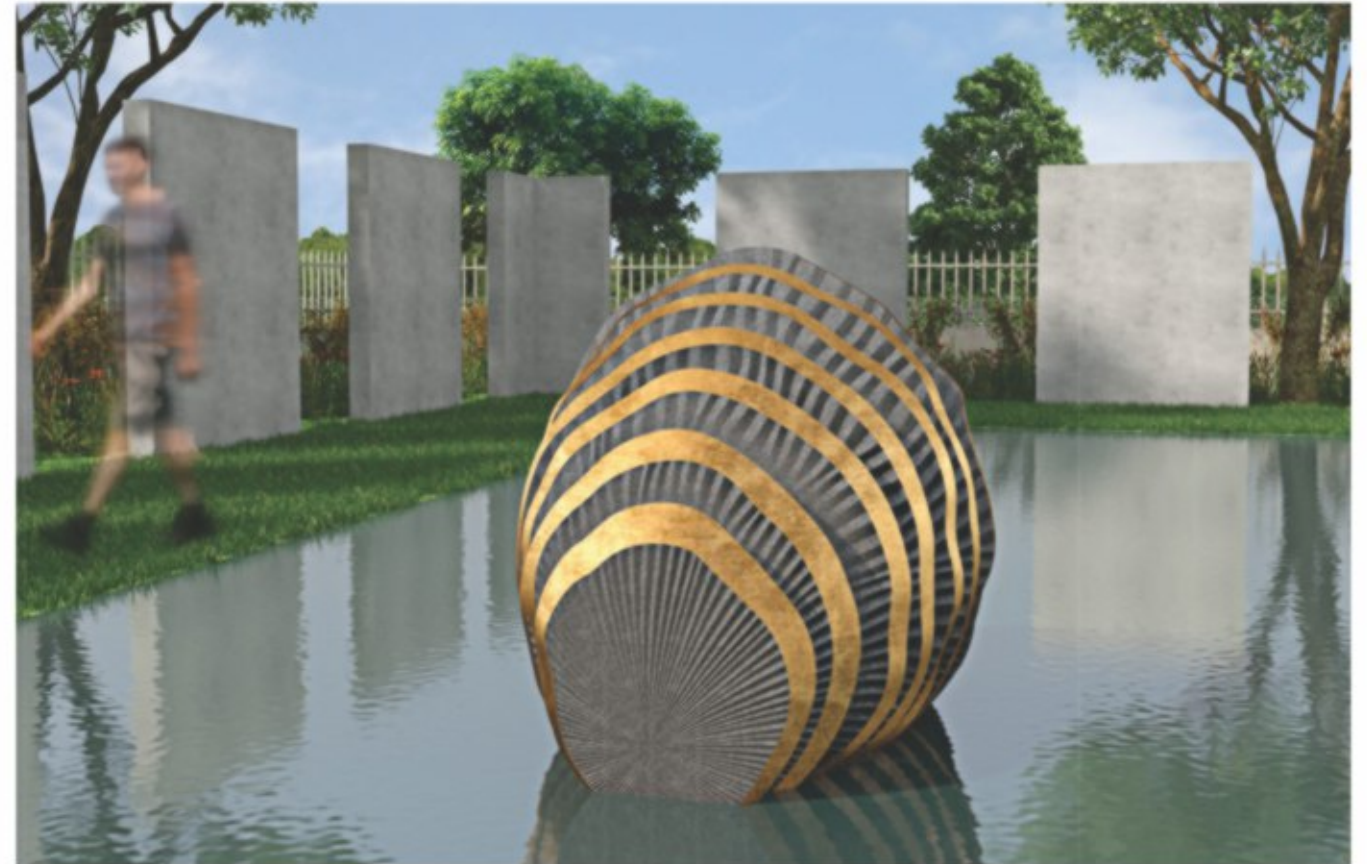
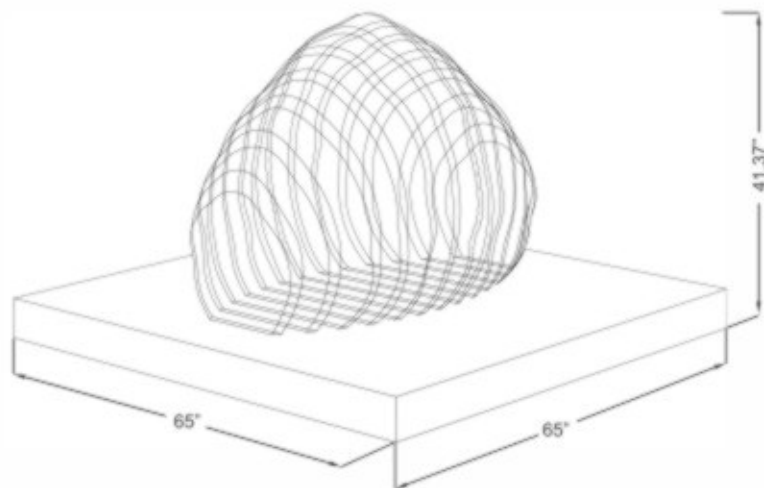


ABOVE & RIGHT | Absolute Black granite Lotus, In High Gloss Finish for the Entrance Water Body



Layer

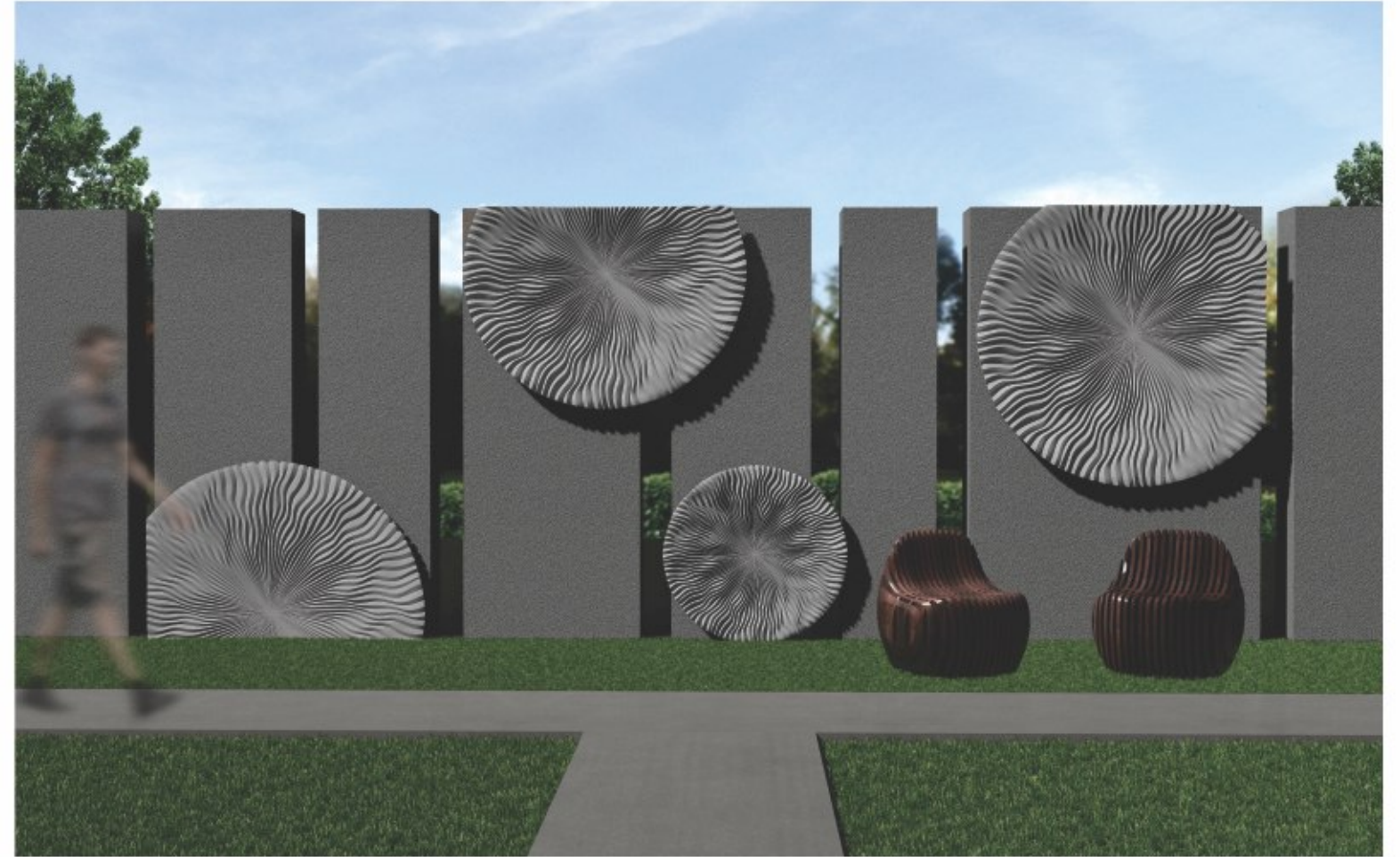
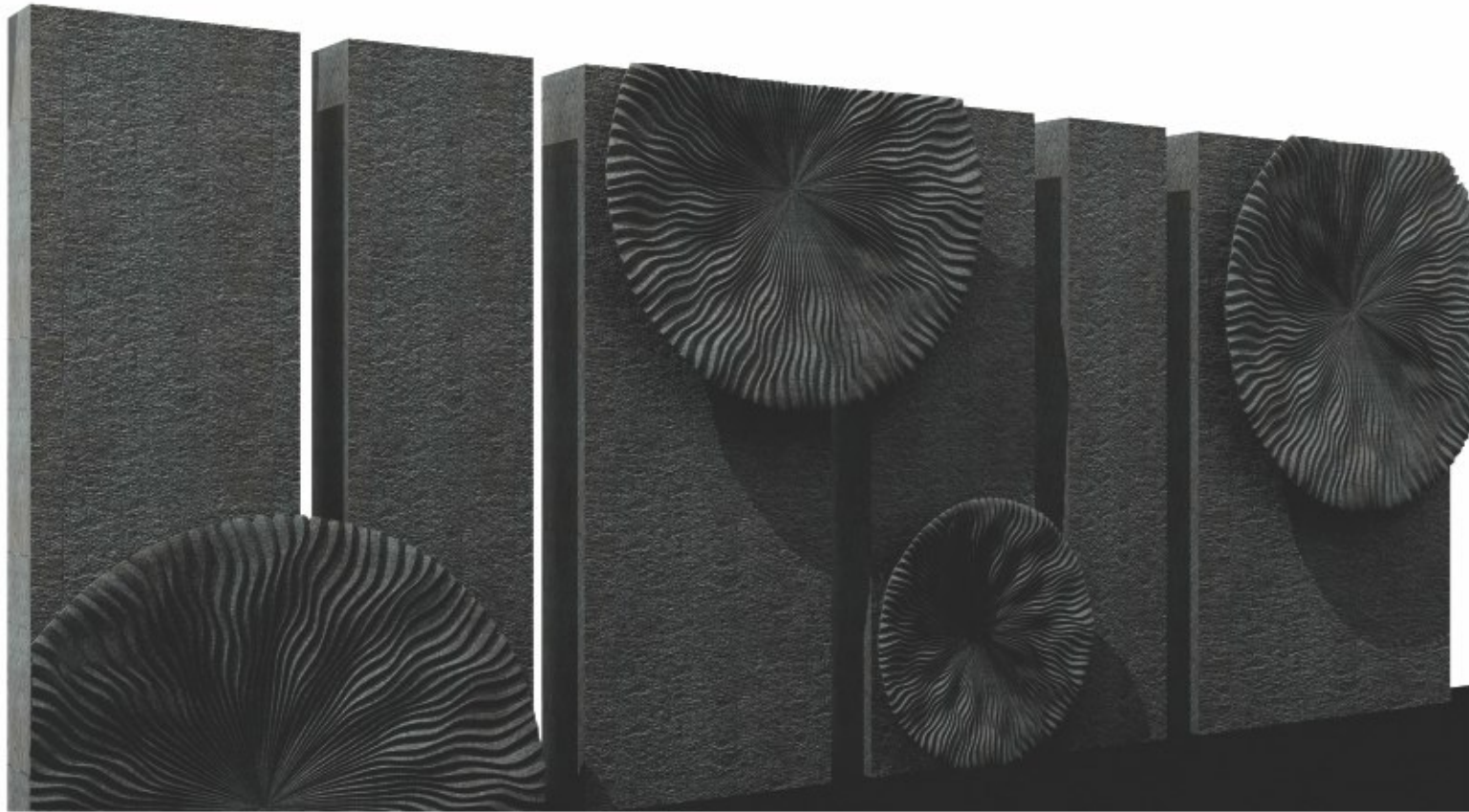
Exploring the concept of multi dimensional sculptures using regular slabs of stone, layering was developed with a combination of metal inserts and dimensional carving. These sculptures can be interpreted in multiple forms and sizes.



Puritsu

"Puritsu" from Ishi Kiri has been "carved into" and "stuck onto" the elevation in the limestone at varied levels.

The boundary wall also features the "Puritsu" as a sculptural element in 100mm thick stone.



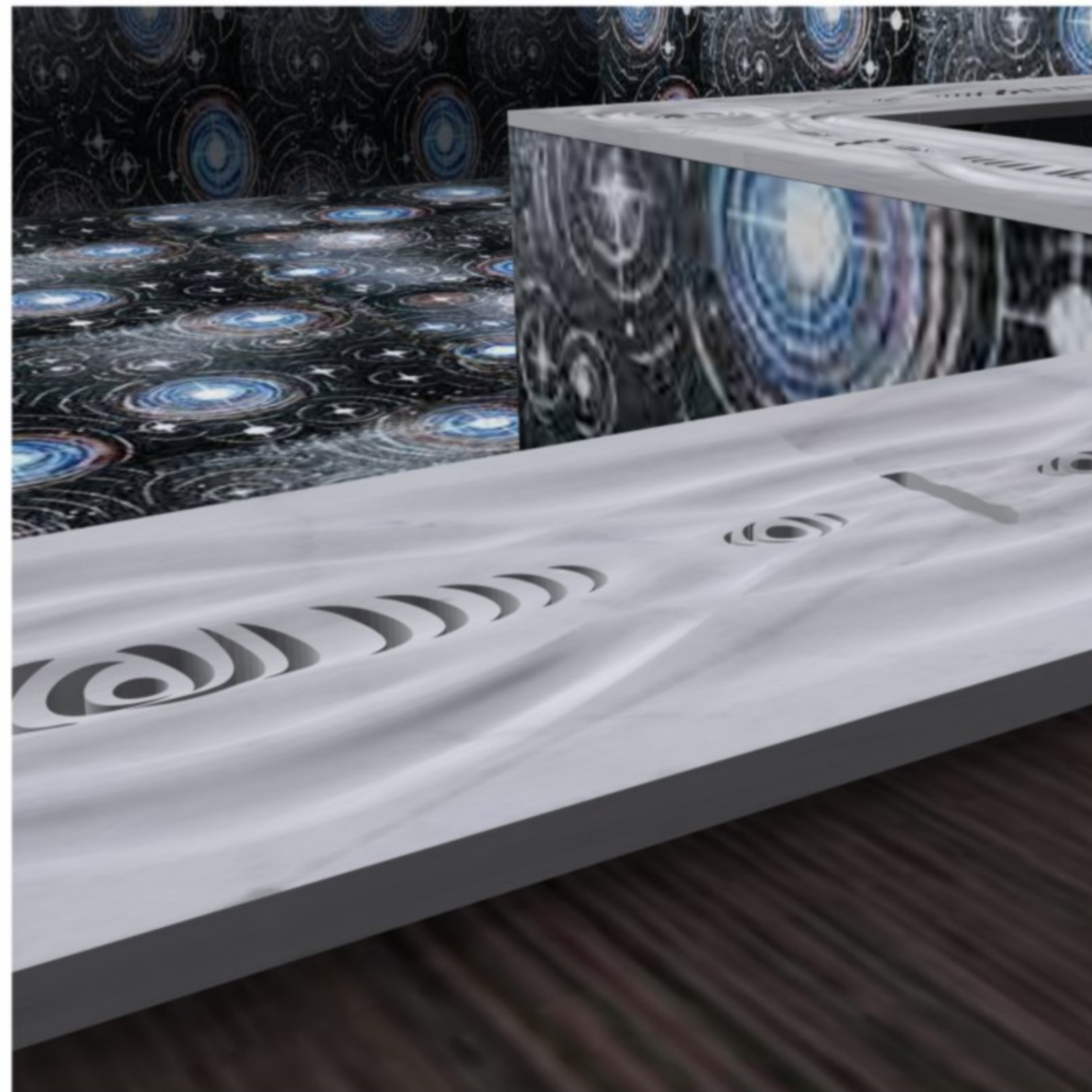
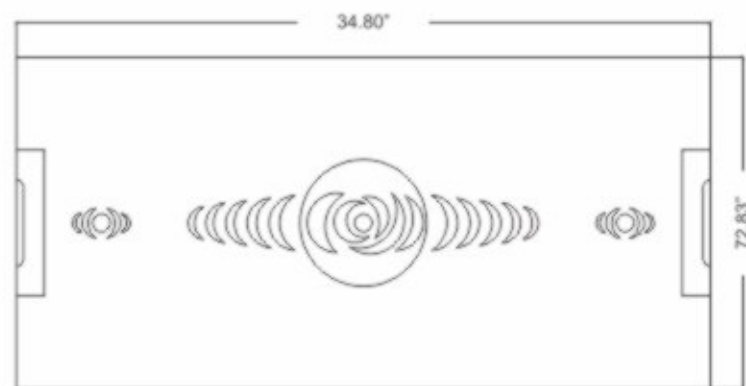
ABOVE | "PURITSU" from the ISHIKIRI collection as a Feature wall



INSTALLATIONS

Pool Grating

In collaboration with Metamorphosis architects, 50 mm Nero Marquino stone used for outdoor party pool grating. Custom developed 'Ripple' grating pattern an unusual sculptural and artistic ambience. Executed in 'Cut out' sections in the grating to allow maintenance.

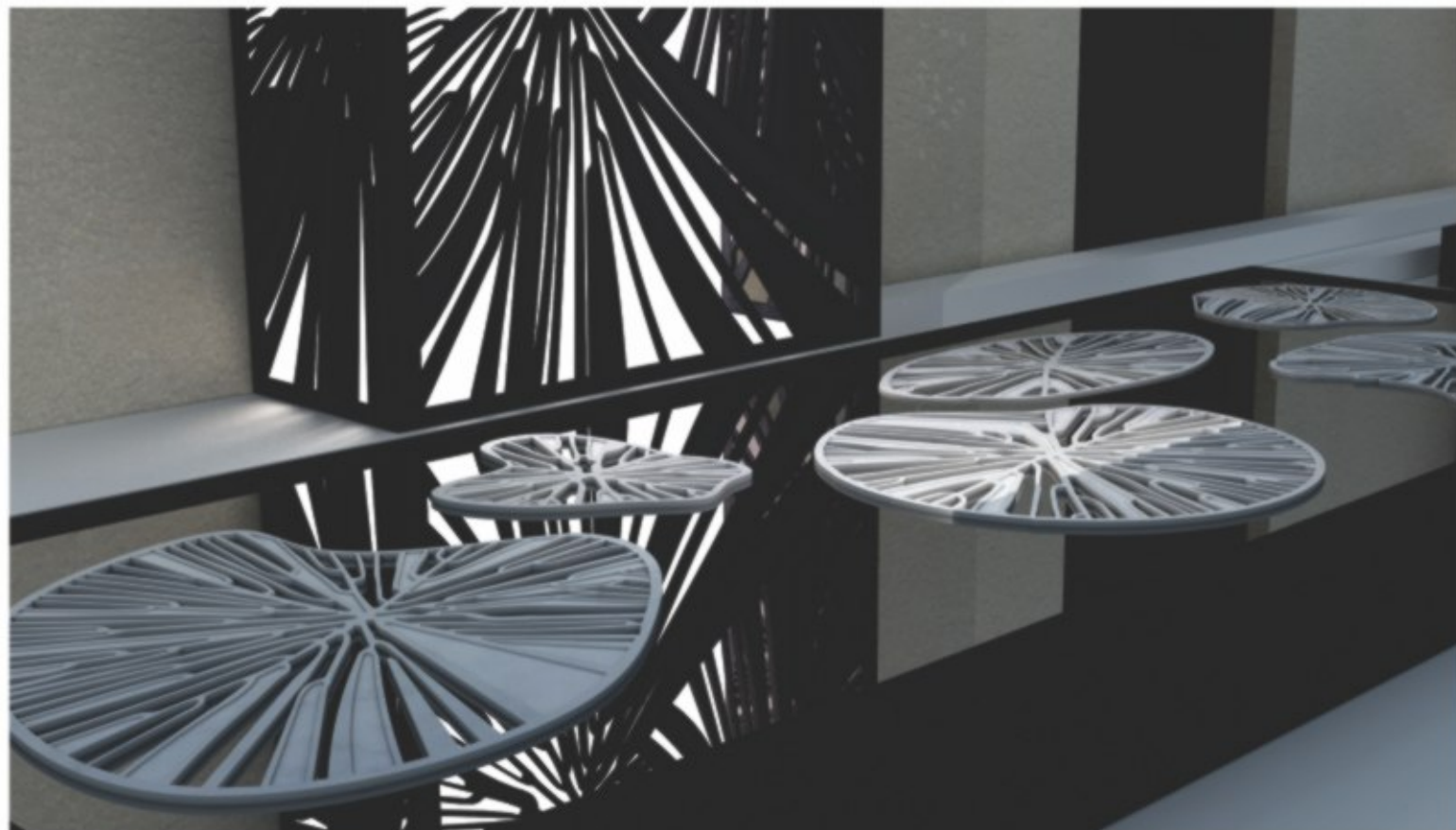




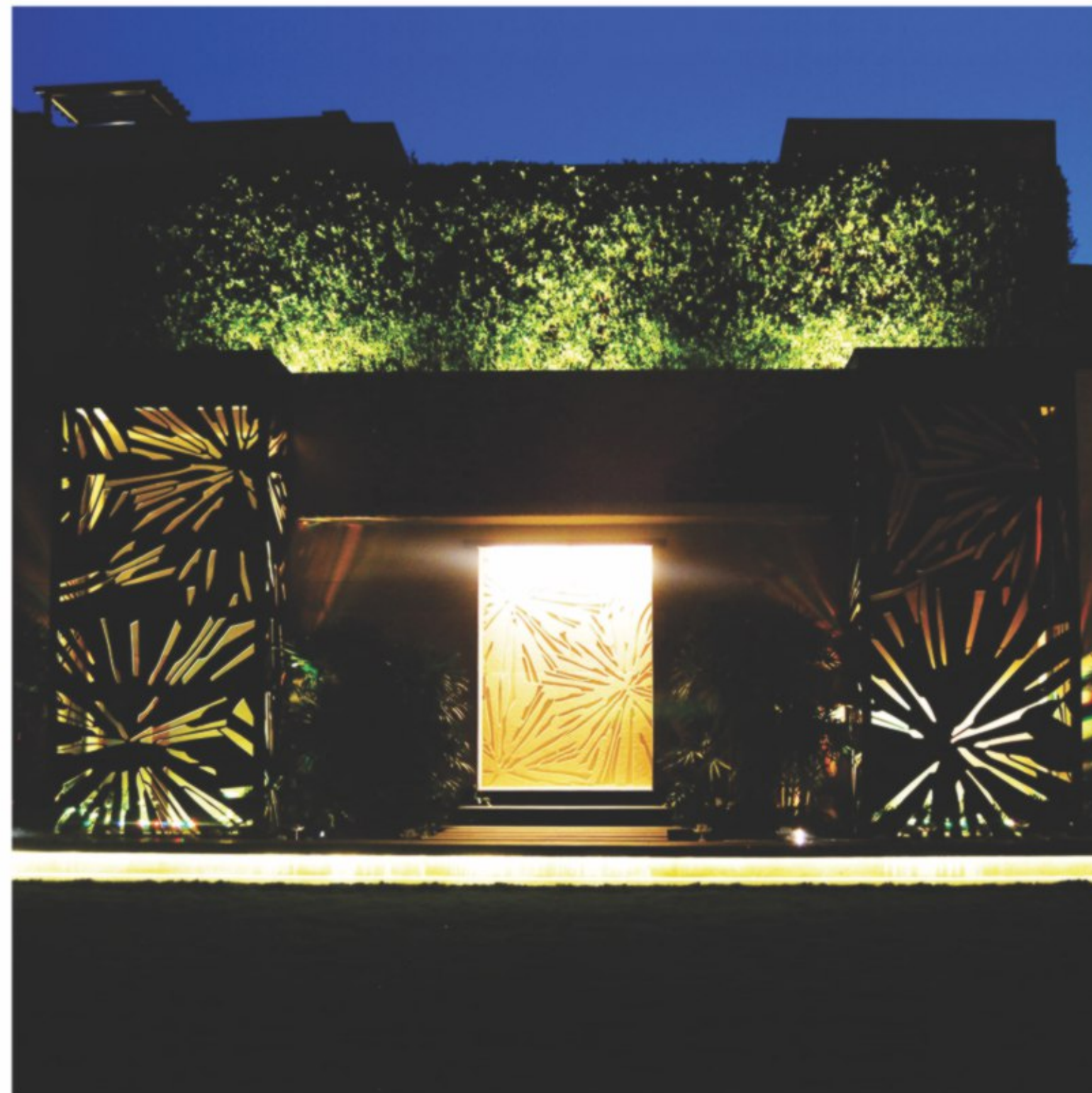
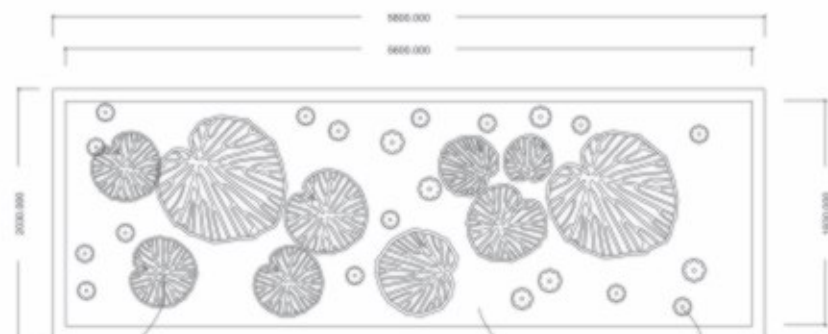
ABOVE | "Ripple" Close-up
LEFT | Black Marquina 50mm thick CNC milled stone grating

Xylem, Lattice Panel

In collaboration with Mumbai based architects - Design Emphasis, 30 mm Graphite Grey Granite used to create imposing 5 meter tall Lotus vein inspired back lit lattice panels on either side of the engraved panel. Flanked by hand carved lotus sculptures and leaves at the base made of Taj White marble



ABOVE | Raised reflective water body inspired by "Xylem"





Topographie

The Topographie from the Aqueous Collection is reminiscent of the topographic lines and the earth surface. This dimensional surfaces is carved from 6 inch block of stone and then texturised to create textural difference. this panel is carved in Autumn Grey Quartzite



ABOVE | Topographie, in Autumn Grey Quartzite, wrapped around the Facia & Boundary wall of the project

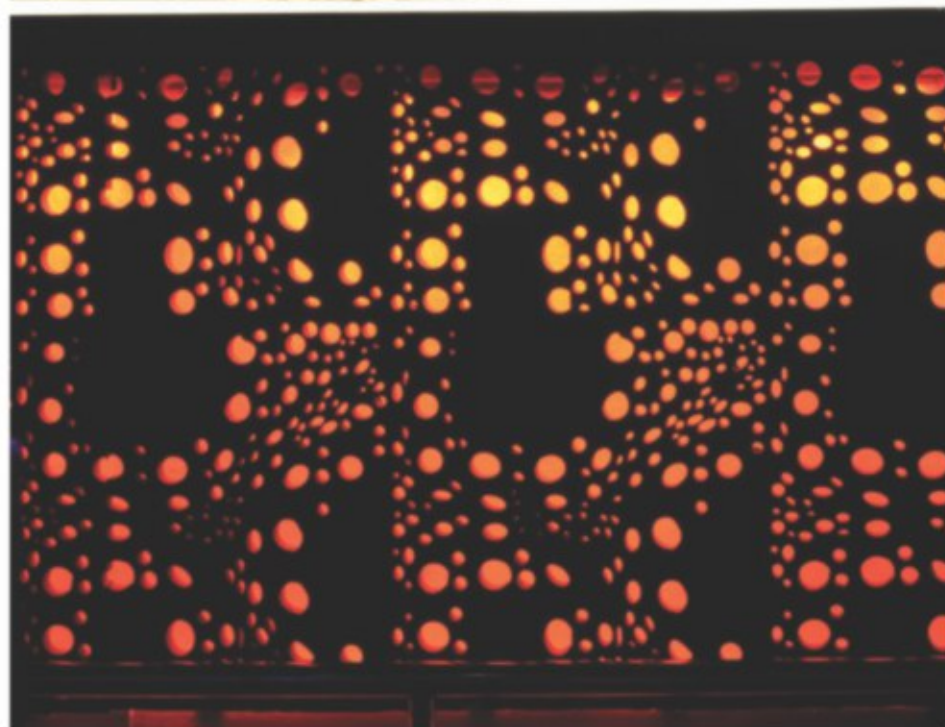
Kheer, Roseate House

Made in collaboration with Thai architects Studio GLTT.

Repetitive geometrical and floral patterns adorn the entrance reception and imposing pillars of the restaurant.

Traditional Indian motifs intricately carved and engraved in 50 mm Autumn Brown Quartzite stone





M Bar

The 30 feet long bar at M Bar and Kitchen is clad with the disheveled stone from the Kinetic Collection by Anoma. Carved in Graphite grey granite, the undulated surface gives a sculptural form to the bar. The perforated stone cladding is further enhanced with back lighting with the RGB mood lights pulsating with the music.

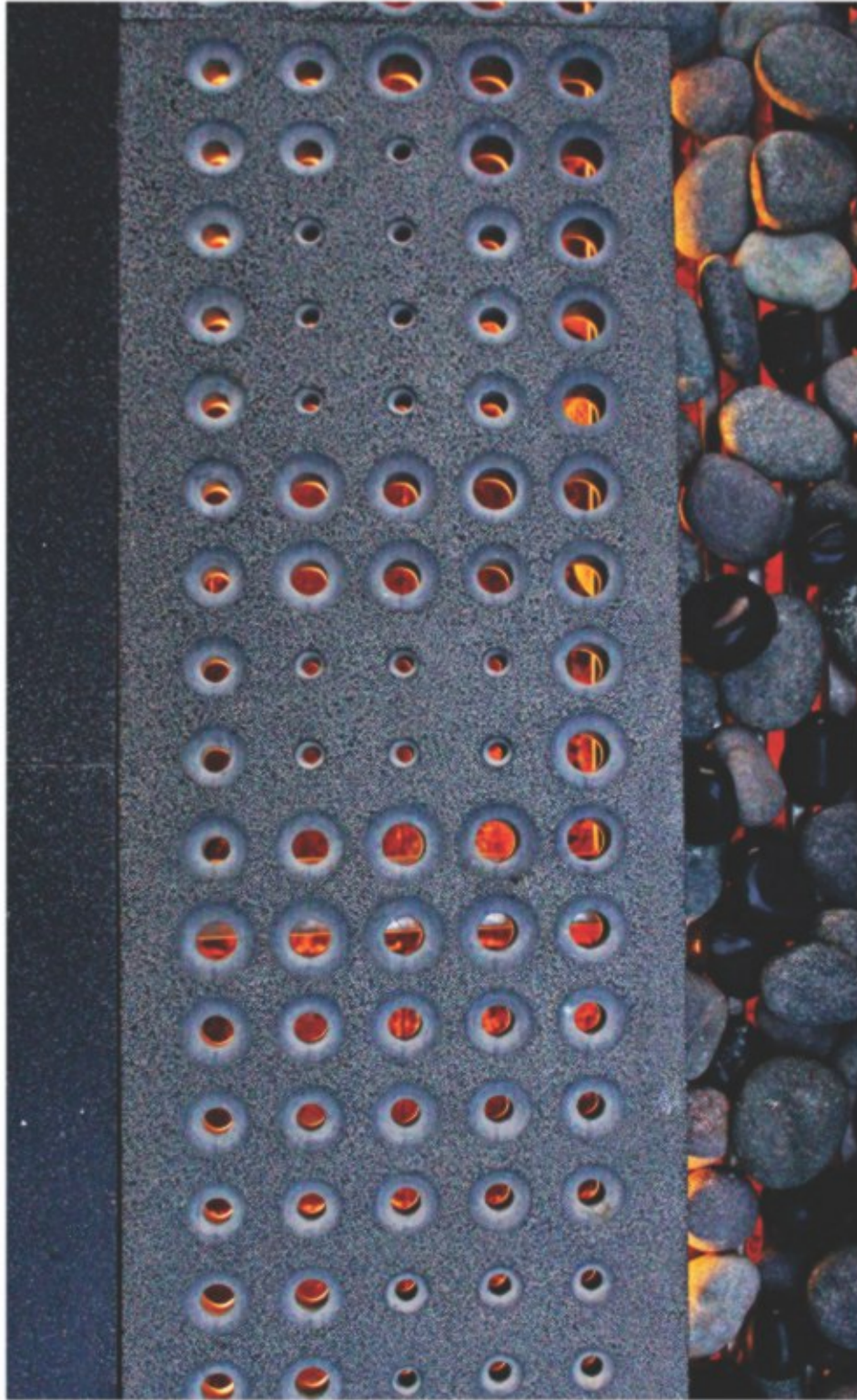


ABOVE | Kinetic #01, in Graphite Grey Granite on the Bar Facia

Kinetic #11

Kinetic # 11 Graphite Grey Granite waterbody, giving a motion effect during day and at night to the swimming pool, were one of the work done at a private residence in New Delhi, India.





Spire Grating

Spire, from CROSTA, in textured granite, as a water body grating, with back lighting.



ABOVE | Water Body Grating with Spire Lattice
LEFT | Water Body Grating with Back-lit Spire Lattice



Sankakku

"Sankakku" from Ishi Kiri Collection has been used for a waterbody. The pattern creates an extraordinary dimension to the waterbody done in New Delhi, India.



ABOVE | "Sankakku" water body with sculptural spouts in granite

Continuum

Continuum in White Marble is an ideal alternate for Onyx and is good for indoor/outdoor application. Varied illumination due to different play of depths makes this installation ostentatious



Dr. Ambedkar International Centre

The project awarded by NBCC, comprised the design development, manufacturing and installation of two torana gates, chaitya arches and architectural louvers spread across the entire facade of the DAIC building. The original Torana Gate, at Sanchi Stupa was 3D scanned by the Odyssey team and the entire monument replicated using CNC milling and finished with hand carving to give it an authentic look. All the material was sourced from a single pit of the quarry and used for the project.

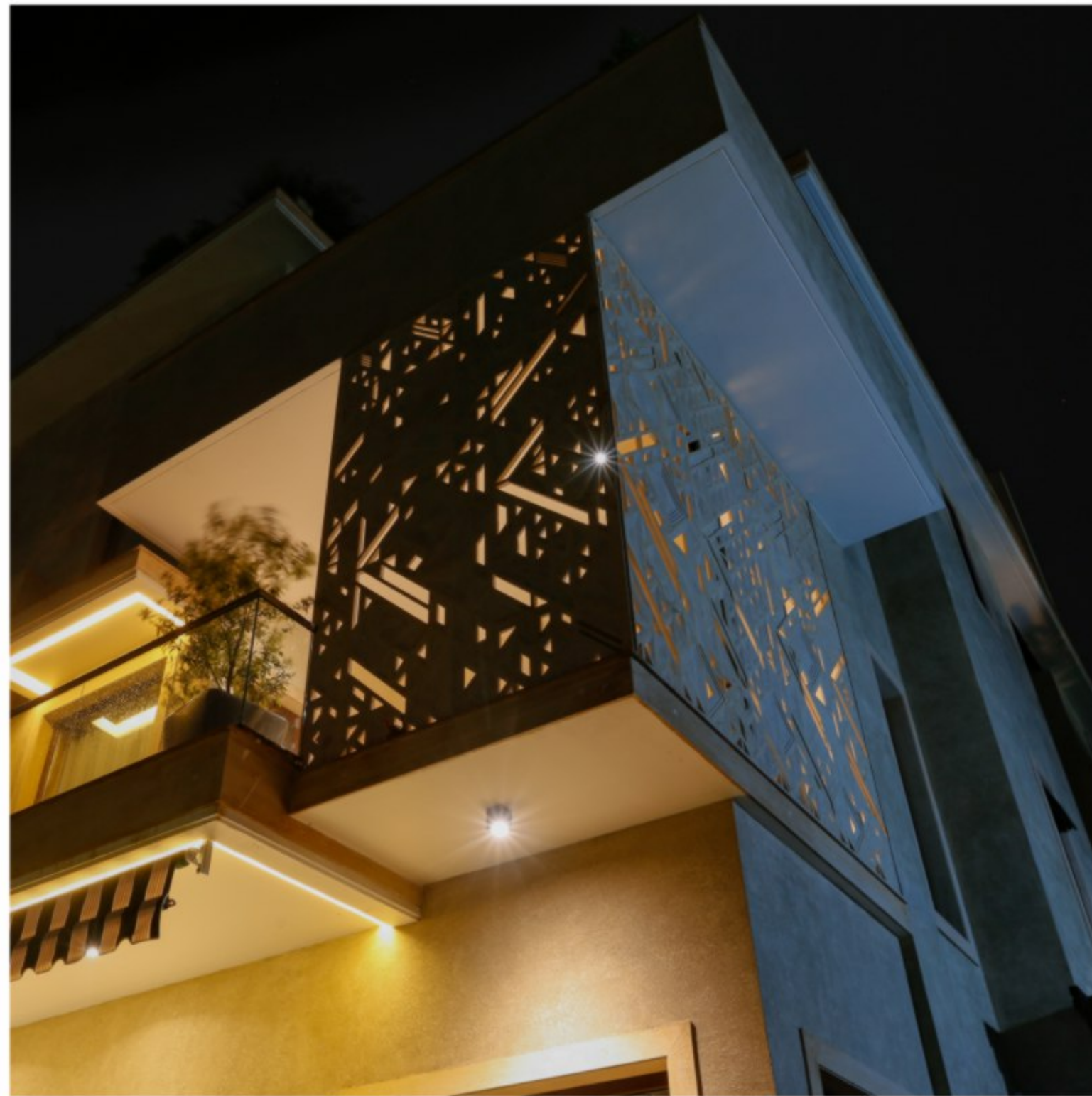
Odyssey 3d Scanned conceptualised, developed and manufactured all the three art features along with all the installation drawing, fixing details, and technical feasibility studies for the complex structures.





Kona

Kona deciphered as wall mural for bigger canvas like
façade is used as seamless lattice in L shape to give
the full façade a more ornate look





Kona





Puritsu

An elegant facade designed by La Arch Plan, in Lutyens Delhi, uses Mocha Crema limestone and wooden planks. "Puritsu" from Ishi Kiri has been "carved into" and "stuck onto" the elevation in the limestone at varied levels. The boundary wall also features the "Puritsu" as a sculptural element in 100mm thick stone.



Puritsu

An enlarged interpretation of Puritsu in Pristine White with varied dimensions, explores the form with subtlety, pairing the dimensional surface of the carved stone with textured negative spaces to allow the pattern to breathe.



Continuum

Continuum in fluid form has been installed on double height wall of a staircase. This installation has been done in combination of two stones which are taj white marble & Graphite grey. This special treat of surface gives this installation a unique dimensionality.



Notes

Variation in color and tone is an inherent part of the characteristic of stone and enhances the beauty of our product and adds character to it. We are not trying to achieve modular tiles and achieve uniformity.

Anoma Surfaces are crafted using a combination of robotics and hand craftsmanship. This develops a distinctly unique texture and surface. The intent is to achieve unique dimensional surfaces. In some surfaces, the tooling marks are more pronounced, due to the base material, and in some surfaces, the hand work is more pronounced.

Each stone surface and module is uniquely and individually crafted. They are not cast and manufactured in bulk.

Do not use color enhancing products on Anoma surfaces, unless you conduct a sample test on them.


Follow us:


 @anomastone


 @anomastone


 @anomastone

 www.anomastone.com

 @anomastone

 @anomastone

 info@anomastone.com

 www.anomastone.com

INDIA | U.A.E | U.S.A.